

MALT CROSS



*Craig Bourne,
Johnson & Wales 1995*



BREWERY
FOOD
PAIRINGS

PHI KAP
COOKBOOK

WRITING
ABOUT FOOD

FAVORITE
FOODS FROM
HQ TRAVELERS

Master Chefs

An interview with two alumni who are making waves
in the culinary industry each in their own unique ways.

98th GRAND CHAPTER

Chicago,
Illinois
July 28-30, 2016



FRATERNITY IN THE DIGITAL AGE

*Join Phi Kappa Sigma
for a Grand Chapter
experience in the
Windy City*

CONVENTION HIGHLIGHTS

- ▶ **Events throughout Chicago over the weekend include:**
 - Foundation Alumni Reception
 - Black Tie Awards Banquet
- ▶ **Effective, focused programming includes:**
 - Powerful ritual exemplification program
 - Growing our Fraternity and Chapters
 - Various Chapter Operations Topics
 - Governing our Fraternity
 - Election of Grand Officers
 - Alumni-focused presentations
- ▶ **Multiple types of registration available. See www.GrandChapter.com for details!**
 - Participate for as little as \$135
 - Full registration is \$300
 - All alumni and undergraduates are welcome! You do not have to be an official delegate to attend.


LOCATION

- ▶ **The Intercontinental Chicago Magnificent Mile**
505 N Michigan Ave
Chicago, IL 60611
 - Great room rate at \$129 per room
 - Reserve rooms through www.GrandChapter.com and not with the hotel.

CHICAGO HIGHLIGHTS

- Shopping on the Magnificent Mile
- Navy Pier
- Millennium Park
- Multiple museums and tourist areas
- Several local food and bar establishments

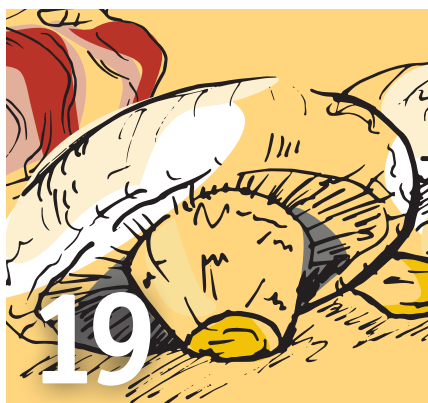
Visit www.GrandChapter.com for registration, hotel reservations, and updates

 Like Us On Facebook:
PKS Grand Chapter

 Follow Us On Twitter:
@PKSGrandChapter

SPRING 2016

Volume 155 | Number 1 | The Magazine of Phi Kappa Sigma



Chuggy's Corner

Can you imagine having a job where your primary focus is to sample some of the best local cuisine?

Newburyport Brewing Soaring Revival

A Brother's brewery is aiming to be available throughout New England before the end of 2016

Phi Kap Cookbook

Our Brothers' favorite recipes ready for your preparation and enjoyment.

15

17

19

A Message from the Grand Alpha	2
Member News	3
National Housing Corporation	8
Chapter Eternal	9
State of the Foundation	22
Ways You Can Support the Foundation	23
Foundation Scholarship Winners	24
Foundation Roll of Donors	25
Chapter News	28

*The Magazine of Phi Kappa Sigma
International Fraternity*

Volume 155, Number 1 – Spring 2016

*Phi Kappa Sigma Fraternity Vision:
Lifelong Growth and Development of
the Fraternity and its Members™*

Executive Director

Timothy Schug, IIT 2007

Director of Member Services

Ronald Stranix III, Ursinus 2012

Director of Growth and Engagement

Mark Logsdon, North Texas 2012

Asst. Director of Member Services

Benjamin Fournier, Maine 2013

Educational Consultants

Ryan Cerone, Clarkson 2014
Patrick Schlmomas, IIT 2015

Expansion Consultants

Mathew Schlehuder, South Alabama 2014
Johnathan Pham, South Alabama 2015

Administrative Assistant

Deborah J. Kuryanny

Magazine Creative Director & Editorial Advisor

Bruce Tria
Tria Designs, Inc.

Phi Kappa Sigma International Fraternity

Two Timber Drive
Chester Springs, PA 19425-2818
P: 610.469.3282 | F: 610.469.3286
www.pks.org | staff@pks.org



*Member of the
North American InterFraternity Conference*



*Member of the
Fraternal Information Programming Group*



*Member of the
Fraternity Executives Association*

Address Changes & News: To update an address or submit news, please email staff@pks.org, or update your profile through AlwaysAPhiKap.org using your username and password. To obtain your username or password, contact the International Headquarters.



EXECUTIVE BOARD

Douglas W. Opicka
Grand Alpha
 IIT 1997

Michael Palladino
Grand Beta
 Georgia Tech 2004

Sean McCann
Grand Pi
 IIT 2006

David Smith
Grand Sigma
 New Hampshire 2006

Hamilton F. "Toby" Smith
Grand Tau
 Richmond 1983

Richard Correz
Grand Theta
 UC Riverside 1994

Kevin Olsavsky
Grand Theta
 Penn State 1986

Brendon Egan
Grand Delta
 UMass Lowell 2010

Matthew DeVries
Grand Delta
 UC Riverside 2010

Maxwell Fugere
Grand Delta
 VCU 2013

James Fulmer
Grand Delta
 Alabama 1964

Raymond J.S. Ruybe, II
Grand Delta
 Randolph-Macon 2013

Kevin Shannon
Grand Delta
 George Mason 2011

The Phi Kap Experience

A MESSAGE FROM THE GRAND ALPHA

Brothers,

I know I say it every year, but I truly am honored to serve you and this Fraternity as Grand Alpha.

Being on the Board for the past 16 years, I've been witness to the remarkable transformation of our Fraternity.

For example:

- ▶ We've now had a balanced budget for the 14th straight year.
- ▶ The organization now offers educational opportunities which are unparalleled in the industry.
- ▶ Our Fraternity is growing through the addition of new Chapters and better recruitment by existing chapters.

One would think that a 165-year-old organization would be fairly stable and unchanging, but that is far from the truth. Phi Kappa Fraternity must continue to adapt to societal changes so we can not only survive, but prosper.

For example, at the 97th Grand Chapter in 2014, the undergrad delegates asked the Executive Board to perform a review of our Fraternity's risk management policies including our Substance Free Housing Policy. Under that charge, the Executive Board began a process to examine our existing policy and consider policy alternatives.

On March 15, 2016, the Fraternity announced a change in our Risk Management Policy effective August 1, 2016. On that date, we will no longer prohibit alcohol on chapter property and will no longer ban BYOB events. In essence, we will have the same risk management policy as virtually every other Fraternity in the NIC. This ends our 16-year endeavor with Substance Free Housing and opens a new era which emphasizes education and personal responsibility.

The Objects of the Fraternity includes the "best interests" and as such we will implement a robust education curriculum around responsible risk management, encourage open and honest communication between our Chapters and HQ Staff, and promote transparency of chapter operations. In doing so, we believe we can better serve our undergrads and combat instances of underage drinking, binge drinking and other risky social behaviors.

This decision was not made lightly and we ask for the assistance and cooperation of all members to protect the future of our beloved Fraternity. We all must take ownership of our Fraternity and conduct affairs in a mature and responsible manner.

The new educational programs necessary under this revised policy will come at a cost. Hence, I am calling upon all Phi Kaps to support the Phi Kappa Sigma Foundation to the best of your ability via financial contributions. The long-term success of the Fraternity is directly tied to your financial support of the Foundation. I'm normally hesitant to make such a direct plea for donations, but we need your support more than ever.

We will no longer prohibit alcohol on chapter property and will no longer ban BYOB events. In essence, we will have the same Risk Management Policy as virtually every other Fraternity in the NIC.

Once again, it has been a privilege to serve this Fraternity and I cherish all of the friendships that I have made over the years. I hope to see many of you at the 98th Grand Chapter in Chicago this summer.

Fraternally,

Douglas W. Opicka
Grand Alpha
 IIT 1997



Learning to Fly

Brother 2nd Lieutenant Matthew Chaney, USAF, South Alabama 2014, was a founding member of the Beta Mu Colony returning to campus in 2012 after a 10 year absence. Brother Chaney provided the Maltese Cross with this exciting career news:

"After college, I began Undergraduate Pilot Training (UPT) for the U.S. Air Force. The first phase of training was very similar to taking 18 credit hours in college, except every class was about aerodynamics and how to fly planes. The next four months were spent in a Beechcraft T-6 Texan II learning at first the basics, quickly followed by aerobatics (think loop, split-s, barrel roll, etc.) and instruments (how to fly when you can't see out of the cockpit). The final block was formation flying, during which we would do those same loops and barrel rolls, only now we have another aircraft dangerously close to us. After I graduated from the T-6, I moved on to the Beechcraft T-1A Jayhawk, which is essentially a small private jet. I have only been flying this new aircraft for about two weeks, but through the next few months of training I will learn the basics of flying larger Air Force aircraft like the C-130, C-17, KC-135, etc. The missions could be anything from in-flight refueling of fighter jets and helicopters, to flying low level, between mountains at night, to dropping supplies or soldiers into dangerous areas.

On the other side of the spectrum, I might also be flying supplies for humanitarian relief to countries experiencing natural disasters. The days are very long and tiring here at UPT, (I very often wake up at 3am, and get home from work around 5pm) but the end result will be worth the effort. I am proud to be serving my country, and very proud to be a Phi Kap!" ❖

Carrying a **BOLDFACE**

Brother Randy Fenton, UCLA 1987, hails from Hermosa Beach, CA and is revolutionizing the world of guitar cases and backpacks with his company, Boldface. Boldface allows for the buyer to customize his or her backpack and/or guitar case using an interchangeable face panel. With the help of some of his Alpha Psi Chapter Brothers, Randy has expanded his business and now sells over \$300,000 worth of product a year through Amazon. Learn more at www.boldfaceGear.com



LIGHTS in the Sky

Indiana Skulls Host Light the Night Fundraiser

By Grant Kaufman, Indiana University 2016

ON SATURDAY, SEPTEMBER 26, 2015, the Delta Pi Chapter at Indiana University hosted its second annual Light the Night fundraiser on Indiana University's campus. The event gathered both the Greek and non-Greek community together to help raise money and awareness about Leukemia and Lymphoma. Over 200 people came out to the event to help support our national philanthropy, and we are proud to say that we had raised over \$10,000 with the help of all of our participants in the Light the Night walk. All proceeds were donated to the Leukemia and Lymphoma Society (LLS), an organization dedicated to funding and research for Leukemia and Lymphoma treatments. LLS had a table from its Indianapolis branch

at the event. "To actually have our organization at the event is really valuable to us," said Jo Garcia, a campaign specialist for LLS who attended the event. "We were reached out to by Grant, and we love being on the IU campus and seeing what they're doing with our letters as well as theirs. The least we can do is show up and give out some free shirts." Be the Match, a national bone marrow transplant registry, also had a table at the event to allow students to sign up as bone marrow donors. The organization has a database of 24 million people in order to match those who need transplants with potential donors.

To entertain everyone at the event there was live music, food and drinks, and



balloons and glow sticks to illuminate the participants. The walk was to begin at dusk so that the balloons would Light the Night sky and help raise awareness for Leukemia and Lymphoma. Before the walk began, Autumn Brooke Neal, a former IU student, spoke to the crowd about her

father who died of lymphoma after fighting cancer three other times. "It is up to all of us to keep up the fight to raise awareness for blood cancers," Neal said. "You never know the difference you could make." ❖

**DID YOU
KNOW
PHI KAPPA
SIGMA**
is a member of
tix4cause.com?

Have fun and help
Phi Kappa Sigma on
tix4cause.com!



1. About tix

tix4cause is an innovative social enterprise turning tickets into funds for Phi Kappa Sigma at no extra cost!

2. Purchase tix

tix4cause offers access to millions of tickets to events across the US, & every purchase can benefit Phi Kappa Sigma!

3. Donate tix

It's easy on tix4cause.com. You get a tax receipt and Phi Kappa Sigma receives 90% of the sale price!

4. Spread the Word

More people knowing and buying tix to help Phi Kappa Sigma means more funds supporting their mission!

Create Memories

-

Support Phi Kappa Sigma

-

Change the World



Brothers Named to **FORBES** 30 UNDER 30

BROTHERS BEN HARVATINE, MIT 2012, whose invention, JOLT, was featured in *The Maltese Cross*, and **Louis Perna, MIT 2009**, co-founder of Accion Systems Inc., have been named in *Forbes* magazine "30 under 30" for 2016 in the fields of Healthcare and Manufacturing respectively.

JOLT is a concussion detector that can be worn by any athlete of any age and sends real time data to any cellphone or smart device. Accion Systems Inc. is focusing on using ion beam propulsion technology for use in small satellites as a non-toxic and non-explosive fuel.

When asked about this honor Brother Perna stated, "Obviously it is a great honor to be named to the list, it wasn't a complete surprise, but we weren't sure if we would make the final cut. My co-founder Natayla and I take lots of pride in being named to the list and we are looking forward to the opportunities that being named to this list will provide."

Brother Harvatine told us, "It's certainly exciting to get recognition for all the hard work we've been putting into JOLT. As far as PKS goes, I don't think I'd be where I am today if I didn't join Phi Kappa Sigma as a freshmen."

It is obvious that we can and should expect even greater things from these two men in the future, and we can't wait to see what they do next.



iStockPhoto

In December 2015, Brother Jacob Miller, Clarkson 2014, met the requirements for Astronaut Candidacy. He will be spending the next several months going through the application process to become a member of the active astronaut corps. Brother Miller writes:

"I was first fascinated with the space program when I was in kindergarten and reading about NASA and the Space Shuttles, Hubble Telescope, and the Apollo Program. My parents would take my sister and me star gazing and I always thought of how cool it would be to be a part of NASA and 'getting up there.' A few years ago I decided to research what would make me an eligible candidate for the program. The abridged version of the main requirements is an appropriate degree and three years of progressive experience. I began my undergraduate studies at Clarkson University in 2010, I joined Phi Kappa Sigma in 2012 and organized many of the recruiting events, all while holding down a part/full time job as a researcher in the new wind turbine blade test facility on campus. I earned my B.S. in Aeronautical Engineering in 2014 and I am currently working on my M.S. in Mechanical Engineering. With the time and experience, the requirements were met. It has not been easy balancing everything, but it has been paying off."

Competing in the **Computer** **Programming** World Finals

Benjamin Grimmer, IIT 2016, and **Andrei Dumitru, IIT 2017**, will be traveling to Phuket, Thailand in May 2016 to represent the Illinois Institute of Technology in the Association for Computing Machinery (ACM) International Collegiate Programming Contest (ICPC) World Finals. The ICPC is a computer programming competition on a global scale. Teams of three from around the world are given five hours and a single computer to write code solving as many complex problems as possible. Benjamin and Andrei's team are among the top competitive programmers not only at the university but in the lower Midwest, placing third out of 150 teams at the regional level to qualify as world finalists. We congratulate them on their successes and wish them the best as they compete this May in Thailand.



It's On Us

By Bryan Carter, Ursinus 2016



THE DELTA RHO CHAPTER AT URSINUS College helped to facilitate campus discussion about issues that are growing across college campuses involving Title IX policies. Co-sponsoring with the Eta Xi Chapter of Sigma Sigma Sigma Sorority, the two organizations teamed up to help host a week's worth of events based around the White House initiative "It's On Us" Campaign. The goal of the week was to tackle the prevalent issue of sexual misconduct and how this relates to campus culture and Greek life.

Sara Vukas, a current Sigma Sigma Sigma member, explained that "...this campaign is important for college campuses to have because it is vital to be aware of what sexual assault is and how to help prevent it. I wanted to be involved with this campaign because I hope that one day we will never have to worry about this happening on college campuses or anywhere for that matter..."

Movements such as these have started to catch the interest of college campuses nationally. These organizations wanted to continue the favor and relay this important information to students at their own college.

The Delta Rho Chapter president during this campaign and current

senior, Bryan Carter, explained "This is a topic that a lot of our upperclassmen have become very passionate about. We wanted to be on the forefront of this topic on our campus, as well as addressing issues that organizations become very passive about."

"This is a topic that a lot of our upperclassmen have become very passionate about. We wanted to be on the forefront of this topic on our campus, as well as addressing issues that organizations become very passive about."

– BRYAN CARTER, DELTA RHO CHAPTER PRESIDENT AT URSINUS COLLEGE

The week kicked off with a "Take Back the Night Walk", in the school's indoor track pavilion, to help raise awareness for sexual and domestic violence in all forms. During this event, booths were set up for students to write down

how they see campus culture and the issues around it, as well as give feedback for our program leaders. This information was then used to help facilitate discussions throughout the week specifically involving campus culture, campus resources available and a sexual assault awareness video. These events were hosted by the two sponsor organizations, as well as Ursinus College Peer Advocates and Administration.

Director of Student Activities and Phi Kappa Sigma alumnus, Todd McKinney, West Chester 1988, stated, "It's always good to see students taking measures to improve the community, especially involving one as prevalent as sexual misconduct."

When the campaign was over, the Delta Rho Chapter did not stop there. Recognizing how prevalent of an issue this was, a few Delta Rho Chapter members decided to take further action by creating bylaws to address these issues, from a fraternity standpoint.

Bryan Carter also stated "A week's worth of discussion and feedback is great; however, we wanted to be able to address these issues as an organization as well. Sexual misconduct is not an easy topic to talk about for a lot of people.

We know that this is a wide-spread problem across college campuses, but we wanted to be one of the first chapters addressing these issues internally."

As of the fall semester of 2015, the Delta Rho Chapter has officially adopted a bylaw that allows them to address these issues from a fraternal standpoint.

"I'm very impressed at the initiative that the Brothers of Phi Kappa Sigma took to handle matters like this internally. Their new amendment very clearly shows that they are not going to tolerate this kind of behavior from their brothers."

– ALLISON KRATZ, SIGMA SIGMA SIGMA

This bylaw seems to only be the start of a larger focus on societal issues from the Delta Rho Chapter.

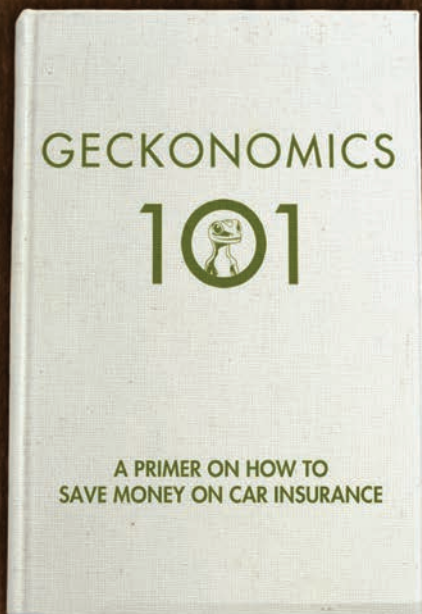
Shayann Ramedani, a current Delta Rho Chapter executive board member, also explained "The amendment was a huge leap forward for Phi Kaps...There is little known about organizations admitting the possibility of a problem and then taking steps to solve it."

Current Sigma Sigma Sigma member, Allison Kratz, summarized the Delta Rho Chapter's forwardness the best by stating, "I'm very impressed at the initiative that the Brothers of Phi Kappa Sigma took to handle matters like this internally. Their new amendment very clearly shows that they are not going to tolerate this kind of behavior from their brothers and the standards that they are setting for their members. I can only hope that other Greek organizations on this campus and across the country can make the same commitment to a safer environment for all that these gentlemen have." ❖

Brothers for **PARIS**

After the November 2015 terrorist attacks in Paris, France, the Gamma Sigma Chapter at Rutgers University saw an opportunity to pull together and help those who had lost so much. Co-sponsoring the event with Delta Sigma Iota Fraternity, the group was able to fund raise over \$1,000 that will be offered to the victims of the attacks. More than 100 students from the Greek community took part in a moment of silence during a candle light vigil. It was a somber night, but it was also exuberant to see so many people come together in a time of tragedy in the hopes of making a difference in the lives of others.

iStockPhoto



Phi Kappa Sigma brothers could get an additional discount on car insurance.

Your completed quote also helps benefit **Phi Kappa Sigma** initiatives and programs. Contact GEICO today and get a free, no-obligation rate quote and, in just minutes, you could be a believer in GECKONOMICS, too.

GEICO
geico.com/greek/PhiKappaSigma
1-800-368-2734



Some discounts, coverages, payment plans and features are not available in all states or all GEICO companies. GEICO contracts with various membership entities and other organizations, but these entities do not underwrite the offered insurance products. Discount amount varies in some states. One group discount applicable per policy. Coverage is individual. In New York a premium reduction may be available. GEICO may not be involved in a formal relationship with each organization; however, you still may qualify for a special discount based on your membership, employment or affiliation with those organizations. GEICO is a registered service mark of Government Employees Insurance Company, Washington, D.C. 20076; a Berkshire Hathaway Inc. subsidiary. GEICO Gecko Image © 1999-2016. © 2016 GEICO

Preserving and Advancing the Housing Interests of **Phi Kaps**

By *Walter Hans Jaeger, North Texas 1997*
National Housing Corporation Board President

The National Housing Corporation (NHC) is an entity charged with preserving and advancing housing interests for Phi Kappa Sigma chapters and alumni groups. It serves as a central repository of information for the best practices regarding how local housing corporations (LHCs) should be run as well as helps form and support LHCs. It aides LHCs in being better managed, organizationally and financially. It supports saving by LHCs so when unexpected things happen, they are better able to deal with them from a savings or borrowing perspective.

As described by Grand Alpha, Doug Opicka, "The NHC, in our vision, becomes the third leg of the stool that balances the fraternity."

To date, the NHC has helped over a dozen chapters with housing concerns. Acquisition of a new chapter house for Clarkson University in Northern New York State and helping the University of Texas alumni optimize housing for their undergraduates, are just two examples of what we've done in past biennium. It is important to note that the NHC has no desire to own Phi Kap houses, however if a LHC is unable to manage a property, we can be of help. Houses have been

lost in the past because they became a burden to LHC alumni volunteers; our mission is preserving property for future generations. Although the NHC is not a bank, we are happy help find a lender for your group. At this time we are not in a position to make direct loans to chapters.

Who makes up the NHC? What are their plans for the future? The NHC is made up of unpaid volunteers from all over the United States. We have created bylaws (vetted and approved by the Executive Committee), a business plan in-line with steady and conservative growth, and are working to revise the housing manual which has not been

updated since the 1980s. Within the next several months, we plan to offer savings accounts and investment funds which will allow chapters and LHCs to securely save for their housing needs, details will be coming shortly. To properly accomplish our mission, we will be seeking to pass legislation during this Grand Chapter that will create an undergraduate assessment. The undergraduate assessment will be used to create a savings and investment corpus for the future and funding of the NHC. We are always looking for volunteers in the industries of real estate, lending, property management, investments, law, architecture, and construction to serve on the NHC.

We have set up a new survey at www.nhcpsks.org. Please complete the survey as it will help us best know how to serve you. ❖

iStockPhoto

The National Housing Corporation

BOARD OF DIRECTORS:

Walter Jaeger North Texas 1997 (President)	Jim Fulmer Alabama 1963 (Vice President)	Lou Semrad Alabama 1985 (Treasurer)	Blake Peek Northern Illinois 2014 (Secretary)
--	--	---	--

AT-LARGE MEMBERS:

Dennis Walter Illinois 1992	Deepak Hadpawat Indiana 2010	Patrick Grimaldi Potsdam 1979
--------------------------------	---------------------------------	----------------------------------



Chapter Eternal

We offer this loving prayer for all Phi Kappa Sigma Brothers who have entered the Chapter Eternal:

“Thanks and praise be rendered now and forevermore to Thee, dear Lord, for having so graciously blessed our Fraternity Brother now fallen asleep. We trust Thee to re-unite the soul with the body in heavenly brightness on the Last Day. Lord, may You grant unto us a godly walk and peaceful departure at Your appointed time. Restore, O Lord, all distressed hearts with sweet comfort and keep us all perpetually in Thy grace for the sake of Thy eternal mercy and goodness. Amen.”

ALABAMA (Alpha Kappa)

Guy A. Fikes 1960

CORNELL (Alpha Rho)

Robert H. Bevan 1961
Frederick G. Sundheim 1941

DENVER (Beta Gamma)

Emmett B. Crain 1959
James T. Smith
Austin Speed 1966
Michael G. Zimmerman 1962

DICKINSON (Epsilon)

William E. Kurtzhalz 1936
J.D. Sleeper 1967

DUKE (Nu)

Charles E. Wiseman 1954

FRANKLIN & MARSHALL (Zeta)

Oliver L. Cleaver 1947

GEORGIA TECH (Alpha Nu)

Robert C. Richards 1945
Eugene G. Webster 1962

IIT (Alpha Epsilon)

Otto C. Dobias 1959

ILLINOIS (Rho)

James B. Arnold 1961
Howard B. Egeland 1947

KANSAS (Beta Beta)

John B. Alden 1972
David R. McDonald 1958

KENYON (Theta)

Raymond Ioanes 1940

MAINE (Alpha Delta)

John R. Buzzell 1957
Stephen K. Gross 1940
Robert J. Stone 1967

MARYLAND (Alpha Zeta)

Charles C. Trexler 1954

MICHIGAN STATE (Beta Delta)

Kenneth G. Cook 1950

MIT (Alpha Mu)

Jeffrey L. Entwisle 1972
Matthew B. Harrington 1945
William R. Hauke 1958
Henry L. Henze 1949
William C. Schoen 1942
Leonard M. Smith 1950

NORTH CAROLINA – CHARLOTTE (Gamma Lambda)

Adam Kaufman 2002

NORTHWESTERN (Upsilon)

Preston C. Beard 1938

OHIO STATE (Alpha Chi)

Marshal F. Scott 1954

OKLAHOMA (Omicron)

James W. Hammond 1964
Mitchell Holmes 2018

OREGON STATE (Beta Epsilon)

Errol J. Krieger 1970

PENNSYLVANIA (Alpha)

John P. Garan 1969
John V. Lee 1944
J.F. Mahoney 1967
E.Craig Sweeten 1937

PENN STATE (Psi)

John F. Albrecht 1957
Michael C. Basilio 1969
John O. Grimshaw 1933
Richard S. Schweiker 1950
Earl G. Wollaston 1956

PURDUE (Alpha Xi)

William H. McKee 1944
Nicholas T. Nylec 1962
Stephen B. Shugars 1987
Wilson S. Usedo 2010

RANDOLPH-MACON (Tau)

Harvard R. Birdsong 1931
Roy M. Cleek 1949
John H. Clements 1954
James M. Glave 1954
David Shephardson 1961

RICHMOND (Phi)

William S. Kirk 1948
Edward M. Mills 1937

SETON HALL (Gamma Epsilon)

Michael D. Sherlock 1990

SOUTH ALABAMA (Beta Mu)

David L. Zimlich 1974

SOUTH CAROLINA (Alpha Eta)

John A. Bolen 1961
Harold D. Williamson 1959

STANFORD (Alpha Tau)

Andy H. Beall 1955
Charles W. Findeisen 1945

ST. LAWRENCE (Beta Iota)

John V. Fogg 1971

TCU (Beta Theta)

William B. Swift 1965

TEXAS-AUSTIN (Sigma)

Ronald L. Bouchier 1951
James M. Buzbee 1953
Donald R. Cunningham 1946
Clifford W. Davidson 1960

TORONTO (Alpha Beta)

Tom Pugliese 1948

TULANE (Mu)

Clarence P. Dodge 1980
Adolphus B. White 1961

UC-BERKELEY (Alpha Lambda)

William C. Walsh 1959

UC-LOS ANGELES (Alpha Psi)

Edward A. Cramer 1956
Llewelyn L. Williams 1941
Roy C. Moore 1958
Richard D. Spence 1949
Louis E. Stricker 1950
Harley C. Taylor 1943

VANDERBILT (Alpha Iota)

Forrest Andrews 1945
James A. Carmody 1967
Joel B. Covington, Jr. 1969
Bernard Gustafson 1951
Charles T. Herndon 1942
Jack D. McClelland 1953
George E. Reed 1959

WASHINGTON (Alpha Upsilon)

Mark S. Hansen 1957
O. J. Harper 1947
Roane T. Sias 1948

WASHINGTON & JEFFERSON (Delta)

Richard B. McCarty 1948
Charles A. Feeser 1943

WASHINGTON & LEE (Alpha Alpha)

Patrick J. Fahey 1950
William A. Thomas 1976

Note: We can publish only the names of those members now deceased about whom we have been made aware. We apologize for any members whose names we have missed.

Master Chefs



By Ryan Cerone, Clarkson 2014

Phi Kappa Sigma has members all across North America participating and succeeding in the culinary industries. Many of these members hailed from the Gamma Psi Chapter at Johnson & Wales University, an institution that has renowned programs in the culinary arts. Recently, *The Maltese Cross* got to sit down with Craig Bourne, Johnson & Wales 1995, and John Serock, Johnson & Wales 1995, two alumni who are making waves in the culinary industry each in their own unique ways. Craig currently serves as an Executive Sous Chef with Aramark. John is the owner of John Serock Catering based in West Chester, PA.



Craig Bourne,
Johnson & Wales 1995



John Serock,
Johnson & Wales 1995



Maltese Cross: Gentlemen, thank you for taking time out of your busy schedules to sit down with *The Maltese Cross*. Many people feel there's a deep inner chef hidden in one's self, just chomping at the bit to get out. When did you first discover your inner most passion for cooking?

CRAIG BOURNE: I was probably six or seven years old when I started cooking with my uncle. He would show me different things when he used to run restaurants, and we would just get together and cook things in the kitchen. I was twelve years old when I got my first job cooking in a snack bar on the beach, but I would say about six or seven is when I really started, you know, learning to make things, baking and cooking, and making bread and all kinds of stuff like that.

JOHN SEROCK: That was very young for me, I started working in kitchens and catering... I think I was about eleven years old, when I first started. My grandmother worked in a bar that my uncle owned and when they would have banquets I started working with her. I started before the labor laws that are around now were really enforced. By fifteen I was cooking full time. In addition to school I was always cooking.

MC: Was it an easy decision to go in to college and say "This is what I want to study, and this is what I want to do with my life."

CB: When I was a sophomore in high-school I went to a technical school for cooking along with my regular high-school. So around freshmen or sophomore year of high-school, I knew this was going to be my career choice. I looked at both Johnson & Wales, and the Culinary Institute of America. Those were my top two schools, so yeah it was an easy choice for me.

JS: I knew by sophomore year as well, that this was what I was going to do, and it was the only route I really looked at. I didn't take any technical classes in high-school though, my mom was very adamant that I keep up with my basic studies in high-school in case I had a change of heart. I could take the gamble on becoming a chef but it was a little bit of a safety net for me.

MC: Now, this is not a very common career path, and it can be a little unstable, did you have good support from friends and family moving in to this major and career path?

CB: Absolutely! They supported me one hundred percent. I suspect because they all wanted me to cook for them [haha]. I recently visited my parents in Las Vegas for a week and they had the dinner menus ready for what they wanted me to cook [haha]. I end up cooking for all the major holidays and I'll do catering for my friend's birthdays and things like that. I love doing it, I'm passionate about it, and it's a lot of fun.

JS: I got a lot of... we'll call them, "raised eyebrows." I went to Johnson & Wales in 1991, so Food Network was launching as I was graduating. All four years that I was at Johnson & Wales, chefs were still kind of looked at as the, you know, dregs of society. We weren't on the pedestal we are now, people looked at you like, "Oh, you went to cooking school because you didn't know what you wanted to do." That couldn't have been farther from the truth. About 95% of the people I knew had the passion and the love for what they were doing; it just wasn't looked on as fondly as it is now. It wasn't a profession; it was just a job back then. I found a yearbook a while back and in eighth grade I said I wanted to be a cook, and of about 60 people in that yearbook, who wanted to be a talk show host or an athlete, I'm the only one doing what I said I wanted to do.

MC: What was your first job in the field, post graduation from Johnson & Wales?

CB: I worked in a small Italian restaurant in North Andover, Massachusetts, called Orzo.

JS: I was an assistant manager at a Houlihan's Restaurant and Bar. They were very active recruiting on our campus. I knew about thirteen or fourteen people who went to Houlihan's when they graduated.

MC: Can you tell me about the climb up to where you are now from that first job?

CB: I actually started at the bottom as a dishwasher and worked my way up, so I've been just about everywhere you can be in a kitchen. Even now, when I was at Phillips Academy over in Andover, Massachusetts, I would go up to the dish room for about an hour a day to make sure they were good and I would jump in and help them so they would know that I wasn't just their boss, bossing people around. Yeah, so I started at the bottom, and I went from dishwasher to a pot-washer, to a prep-cook to a line-cook. I made my way all the way through management. It's been a long road but it's been a lot of fun.

JS: So I worked for Houlihan's for about a year or year and a half, then I left there to become the manager at a bar that was opening up in my area. I went with them for a few months, then I went to a caterer, but, the whole time I was doing this, Houlihan's was kind of dangling a carrot in front of me. I went back to Houlihan's and I was with them for about three and a half years, where I became a general manager. I was the youngest general manager in company history. I was just a little over twenty-four years old. I quickly got the reputation as their clean up guy, where I was brought into a restaurant that was failing and turn it around, and made it profitable. They were going to send me to another restaurant but catering was where my heart was and at 27 years old I took the leap and started my own business. I did a few odd jobs in the business while I was getting that off the ground.

MC: What is your absolute favorite dish to make?

CB: If I had my choice, I'm big into barbeque, and using smokers, and curing bacon and brisket. I would have to say southern style barbeque is my favorite thing to do.



JS: I've really come to love making this braised beef short ribs that we make for our clients, it really has become my favorite thing to make. You can change the flavor profile on them so easily, I can do an Asian inspired, I can do a Moroccan inspired, or we can do a traditional salt and pepper seasoned mid-west over mashed potatoes. It's one of those dishes you can take a less expensive cut of meat and make it whatever you want and let it tell a story. I really get to show off when I make this dish.

MC: What about something you just can't stand making?

CB: I'm not great at baking and decorating. I can bake well enough; I just can't decorate cakes or do a fancy flower on a cupcake or something like that. When it comes to baking I just keep it simple. When I have to do it I kind of cringe a little bit because there is more

science to it, you can't just throw stuff in a bowl and pray it comes out.

JS: Not really. Because we are caterers, we do what our clients want. I take that approach because it's not up to me to say I'm sick of making something. I may have a client call and ask for something I haven't made in four or five years, if it's a client I have a good relationship with I may push them in another direction and say something to the effect of, "I didn't know people still at that. [haha]."

MC: Regarding restaurant etiquette, do you have any customer requests that are your biggest pet peeves?

CB: Especially in today's world, it really depends on where you go, but people like to order things that aren't on the menu. I think they think that we can just whip up anything they want with ease. People want what they



Catering was where my heart was and at 27 years old I took the leap and started my own business.



want, especially in places like that Italian restaurant I discussed earlier. They'd tell the waitress I want it like this, they would say yes of course, come back to me and I'd have to tell them, "No, we don't do it that way, we do it this way." I think that is one of the biggest pet-peeves for anyone who works in cooking or food prep, no matter where they are.

JC: In catering, I don't have to deal with this so much. Three years ago with the onslaught of dietary restrictions it got a little chaotic. I take food safety very seriously, so if someone has a severe allergy, I want to be aware of it. The last thing I, or any chef wants is someone to have to pull out an EpiPen in the middle of a meal. When you find out that it's not an allergy, it's just distaste for something, that is when it becomes a major issue. Don't invent an allergy because you don't care for something. Another thing is don't be disrespectful to the staff.

MC: Thank you gentlemen for your time today, before we wrap this up, can you each tell The Maltese Cross some of your favorite moments or memories from the Gamma Psi Chapter at Johnson & Wales?

CB: When I pledged and went through rush we had about fifty eight brothers at the time. I started with a group of sixteen pledges and thirteen of us made it through. We were a well respected group, pledging was great. I was just in NYC not too long ago where I met up with three of my Chapter brothers to go Madison Square Garden. I loved pledging and being brothers, and that is what I told the Beta Chi guys that I just started working with. My favorite memories were just hanging out with my brothers, going downtown, and road trips. Those were the best things. We'd get in a car and go to Toronto, Oneonta, MIT, Southern Maine, Bryant University, we'd go everywhere. We'd hop in the car on Thursday

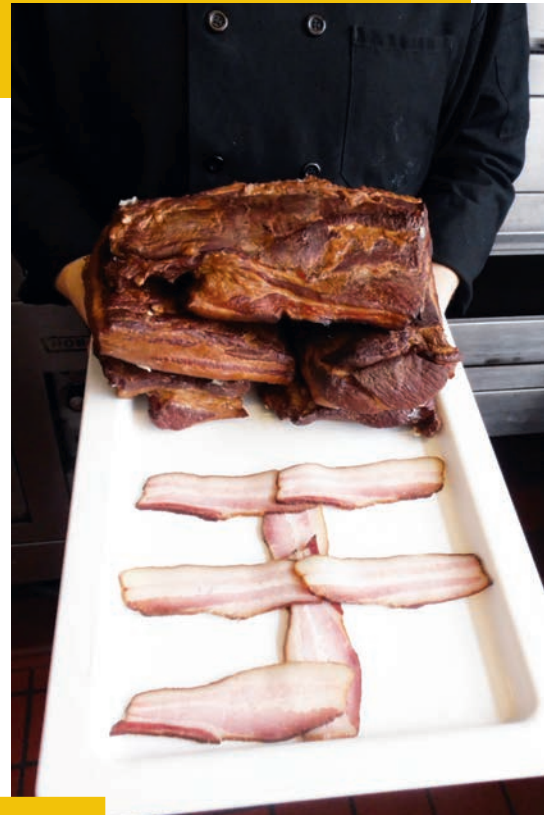
and just drive, to just show up at a place and be welcomed because of the letters on your chest was something special. In the fall of 1994, we had a regional conference at Johnson & Wales, so they all came to us and that was just fantastic. We didn't know any of the guys when they showed up and we just welcomed them in. I'm still good friends with one of the guys who came from Toronto, and that was over twenty years ago.

JS: When I got to Johnson & Wales we hadn't chartered yet, we were a fresh colony, so I when walked in my freshmen year I was the first pledge class that went through. In high-school I was involved in a lot of extracurricular activities and clubs, so to be able to come in and be a part of a fresh club that was very diverse was great. It was great because it was a diverse group, there was no stereotype of what a Phi Kap brother

was at Johnson & Wales because they were such a new group. We had brothers from everywhere; the Caribbean, Canada, all over the United States, it was such a diverse group and no other house had that. Also, we had a strong culinary group, and we used to do family dinners, once a week, for everyone in the house and we'd invite other houses too. It wasn't something like throw a chicken in the oven either, I'd make fresh pasta and everyone would come help out. We'd invite the sororities over, and we'd do a Thanksgiving dinner in the middle of April. It was something more special than going to the bar or a sporting event or study house. It was making a meal together, coming together, food is one of the most basic things in life you need and it was so great and special to share that with other people. ✦



I actually started at the bottom as a dishwasher and worked my way up, so I've been just about everywhere you can be in a kitchen.



Spirit  Recognition's

PHI KAPPA SIGMA

C O L L E C T I O N

visit the web
or call for
these items
and more!

www.spirit.cc
800.321.7747



Tech Polo Shirt

Moisture wicking fabric with embroidered letters.

Color: black S, M, L, XL, XXL
024-031210 \$29.95 (XXL +\$3)



Crested Polo Shirt

100% cotton pique with embroidered crest.

Color: white, black, navy S, M, L, XL, XXL
024-030250 \$35.00 (XXL +\$3)



Lettered Sweatshirt (hooded)

with sewn on twill fabric letters.

Color: black, gray S, M, L, XL, XXL
024-027040 \$49.95 (XXL +\$5)



North Jacket

Microfiber top and fleece body with embroidered letters.

Color: black S, M, L, XL, XXL
024-993121 \$49.95 (XXL +\$5)

Two Line Hat

with two color embroidery

024-050330
\$15.00



< Dugout Hat

024-050220
\$15.00

Felt Banner >

measures 18" x 36"
024-076530 \$29.95



SAVE Teddy Bear

024-090210
ONLY \$15

SO COOKING FOOD FOR A LIVING IS ONE THING that we've focused pretty heavily on in this issue of the *Maltese Cross*, but could you imagine having a job where your primary focus is to sample some of the best local cuisine? Enter Grant "Chuggy Bear" Shindo, IIT 2009, who serves as a writer and food blogger for Frolic Hawaii, an entertainment and lifestyle website that covers dining, nightlife and other fun things happening in Hawaii.

Grant's passion for food has always been a part of his life, but it wasn't until his time in the Alpha Epsilon Chapter at Illinois Institute of Technology did it really move to the front seat. For a few semesters, Grant worked as the chapter house cook, gaining some influence from local areas in Chicago and preparing fun and enjoyable meals for his Brothers.

"I was going to school and cooking at the same time. In addition to that, to kind of get inspiration for the things I did cook, I would go out to different places in Chicago and try new foods. This led to me being asked by Tech News (the school newspaper) to start doing a food column for them."

Before "Chuggy Bear" began writing his column for Tech News, the magazine focused on lifestyle and technology. A food column was something totally new for this audience. This experience led to Grant posting many of his reviews on the popular site, Yelp, a side gig he continued after he moved back to Hawaii after graduation.

"I took a job at the Bank of Hawaii and on the side I was writing for Yelp. The community manager in the area asked me if I wanted to become a Yelp Elite writer. These guys had a little more clout than regular reviewers. When I became a Yelp Elite, it really stoked the fire for my passion of writing about food."

When I became a Yelp Elite, it really stoked the fire for my passion of writing about food.

Realizing a true passion for sharing his experiences, he was able to find Nonstop Honolulu (now called Frolic Hawaii). In 2011, Grant took a freelancing job with the company and once Nonstop Honolulu was bought and became Frolic Hawaii, Grant became full-time and the rest was history.

Chuggy's Corner

By Ron Stranix, Ursinus 2012

"Being acquired gave us the flexibility to do what we needed to grow and expand. I was lucky to get that full time position on the team to help really shape it visually, especially on the social media side."

Grant has been actively writing for Frolic Hawaii for over four years now and he wanted to share some of how his experiences would differ from a traditional food critic.

"I am not a food critic. Food critics write the good and the bad. For me, and this might be a Hawaii thing, but I am not

FROLIC
HAWAII



in the business of putting people out of business. I'm looking to showcase the chefs and the people who are doing great work, as well as the great foods they are creating. If you look at the blog on the website you will see that the pieces I do focus on the positive."

When discussing his focus, he did mention that not all places he goes to are worthy of praise, but if he particularly doesn't like a food experience, he chooses not to write about it. In addition to only writing the positives, Grant feels it is important to look at the entire dining experience and highlight those



important things that help give the best outlook of the restaurant.

"Another important difference between what I do and a food critic is that food critics have an expense account. When I'm out I use my own money and I honestly prefer that. The reason being is because if I try a dish and it costs \$15, I need to be able to explain to the reader if this dish is worth \$15. I can tell the single mom who is raising two kids if this meal is going to be worth her hard earned money. And being able to connect with people on that level is extremely important." ❖

Check out Grant "Chuggy Bear" Shindo's blog at www.frolichawaii.com/chuggyscorner/

MATHEW SCHLEHUBER, EXPANSION CONSULTANT

RESTAURANT: Washington State University Creamery
MENU ITEM: Cougar Gold Cheese
LOCATION: Pullman, WA

PATRICK SCHLOMAS, EDUCATIONAL CONSULTANT

RESTAURANT: The Banzo
MENU ITEM: Falafel and hummus platters.
LOCATION: Madison, WI

RYAN CERONE, SENIOR EDUCATIONAL CONSULTANT

RESTAURANT: Smoke's Poutine
MENU ITEM: French fries smothered with cheese and gravy, and your choice of pulled pork, beef, onions, or a ton of other toppings.
LOCATION: Toronto, Ontario

RON STRANIX, DIRECTOR OF MEMBER SERVICES

RESTAURANT: Portillo's
MENU ITEM: Chicago dog (w/ tomato and a pickle) and a chocolate cake shake
LOCATION: Chicago, IL

JOHNATHAN PHAM, EXPANSION CONSULTANT

RESTAURANT: Sushi King
MENU ITEM: Nigiri platter
LOCATION: Henrico, VA

TIM SCHUG, EXECUTIVE DIRECTOR

RESTAURANT: Bub's Burgers and Ice Cream
MENU ITEM: Gourmet elk burger
LOCATION: Indianapolis, IN

MARK LOGSDON, DIRECTOR OF GROWTH AND ENGAGEMENT

RESTAURANT: Hard 8 BBQ
MENU ITEM: The brisket stuffed baked potato with all the toppings and the cobbler
LOCATION: Stephenville, TX

BEN FOURNIER, ASST. DIRECTOR OF MEMBER SERVICES

RESTAURANT: Cafe Du Monde
MENU ITEM: Beignets
LOCATION: New Orleans, LA

Food from the Road



Newburyport Brewing *Soaring*

By Ron Stranix, Ursinus 2012

LAST YEAR'S MALTESE CROSS, FEATURED

Chris Webb, New Hampshire 1993, and his brewery Newburyport Brewing Company. Chris and his partner Bill Fischer's company was making waves over a year ago, being the smallest brewery to be selected by Delta Airlines to be featured on their regional flights between New York, Chicago, Washington D.C. and Boston. Chris mentioned then that this partnership put their company on the national map and with just over a month, they were already seeing the attention.

We get calls from people that we would have normally not gotten calls from in terms of interviews and people who want to invest in the brewery.

In the year since Chris was featured, Newburyport Brewing Company has continued to grow, launching their fourth year round beer called the Melt Away Session IPA.

According to Chris, "It's a light, crisp, hoppy IPA that comes in at about 4.6% ABV. It follows in the tradition of some other session beers, meaning you are able to have more than a couple because the alcohol content is so low. Our tagline is 'A sessionable India Pale Ale for year round beach days.' We are really proud of this beer because it allows people to have a craft, hoppy beer to bring to the beach.

2015 also proved to be an award winning year for Newburyport, as they took home various awards from the United States Beer Tasting Championship (USBTC) and the



BEER/FOOD PAIRINGS

Keeping with our magazine theme of "Brothers in the Culinary Arts", Chris was able to supply us with some awesome food pairings that you should keep in mind if are able to sample any of his four year round beers. Check out the pairings below:

PLUM ISLAND BELGIUM WHITE

"For me that's all about the grilled fish taco or the fish and chips. Anything seafood and light will go well with the coriander and spices of this beer."

NEWBURYPORT PALE ALE

"Chicken and waffles! Fried chicken between two homemade waffles with maple syrup will pair wonderfully. This is a nice American pale ale that appeals to all different types of beer drinkers, so some kind of comfort food like that will do you right."

GREENHEAD IPA

"This beer is all about the New York sirloin or the filet mignon. This is a rich, hoppy beer that goes really well with steak and potatoes."

MELT AWAY SESSION IPA

"This one spans all over. But I would say anything from fried clams to a Cobb salad or kabobs to a cheeseburger at a barbeque. If you are grilling in the summer time, you should have a Melt Away in your hand."

Great International Beer Festival (GIBF).

"We are proud to say that the Plum Island Belgium White took first place for the Northeast in the United States Beer Tasting Championship and the Newburyport Pale Ale took second place. In the GIBF, the Belgium White came in second place for the Northeast."

Chris was also very excited to announce that three new beers being introduced to the public were praised at these two beer festivals. The Das Kolsch, Yankee Red, and Yankee Blue will all be available in 2016.

"Das Kolsch is a really nice ale and lager hybrid that came in first place at the USBTC and third place in the GIBF. The Yankee Red is a cherry weiss beer and the Yankee Blue is a blueberry weiss beer. These are really nice tart, sweet beers. The Yankee Red came in first place in the 'Fruit Beer' category at the USBTC and the Yankee Blue came in second place. So that was kind of a cool experience."

Outside of the beers themselves, Newburyport Brewing Company was also awarded the Bons Editors Choice Winner for Best of the Northshore and the Best Brewery in *Merrimack Valley* magazine for the second year in a row.

When following up about the Delta Airlines partnership, Chris was happy to discuss how impactful that working relationship has been.

"We get calls from people that we would have normally not gotten calls from in terms of interviews and people who want to invest in the brewery. Liquor stores are also really excited to have the beer because they are hearing about people drinking it on the flight and then driving to their local liquor store to buy some."

For those who are interested in trying some of Newburyport Brewing Company's delicious creations, Chris mentioned that the beer is now available in a few states outside of Massachusetts.

"This year we launched in New Hampshire and we have launched the Pale Ale in New York. This year, we will be expanding to other states in New England. The goal is to be a full New England brewery by the end of 2016."

Brother Webb is always excited to meet Brothers from all across the nation, so if you find yourself in Massachusetts, make sure to stop by and try one of his great brews. ❖



Only for Men of Honor



Signet Cufflinks

GP \$100
SS \$145
10K \$250



To order visit:
www.HJGreek.com
or call 1.800.422.4348
Official Jeweler to Phi Kappa Sigma



Phi Kap

COOK BOOK

Illustrations by Jenny Alberti



RUYPE'S SAVORY MEATBALLS

Submitted by Raymond J.S. Ruybe, II, Randolph-Macon 2013

Yield: 18-24 meatballs

- ▶ 2 lbs. Lean Ground Beef
- ▶ 2 small Eggs
- ▶ 1/3 cup Worcester Sauce
- ▶ 1 tbsp. Garlic Powder
- ▶ 1 tbsp. Onion Powder
- ▶ 1 tsp. Celery Salt
- ▶ 1.5 tsp. Ground Ginger
- ▶ 1 tbsp. Italian Seasoning
- ▶ 1/2 cups Italian Breadcrumbs
- ▶ Shredded Asiago or Parmesan Cheese

In a medium bowl mix: Garlic Powder, Onion Powder, Celery Salt, Ground Ginger, Italian Seasoning, and Italian Breadcrumbs.

In a medium bowl beat the eggs (include yolks) with Worcester Sauce.

In a large bowl: knead the Lean Ground Beef with the contents of the two medium bowls (by hand) until the texture and ingredients are consistent.

Roll the raw meatballs into 2.5-inch spheres, and place in a large covered pan over medium heat for 10-15 minutes.

Be sure to roll the meatballs so that they cook evenly but do not burn on any one side.

Sprinkle shredded Asiago or Parmesan cheese over the meatballs and enjoy them in pasta sauce with spaghetti or as a savory side dish. With or without a robust red wine.

It is no secret that as students and young adults we must sometimes create culinary delights on a tight budget. Thus, in my earliest college years, I survived solely by eating pasta, before I discovered that even the blandest spaghetti sauce can be made into a delightful dish with the addition of the perfect meatball.

This recipe has been formulated over twenty years while attempting to create the perfect pasta sauces on a tight budget, using a moderately stocked spice rack, and with a minimum of fuss.

P.S., These meatballs also make a great refrigerated midnight munchie.

Eat Well, Brothers!

CHERRY PIE

Submitted by Curt Klinkner, Wisconsin 1995

- ▶ 1/4 cup Minute Tapioca
- ▶ 1 cup Brown Sugar (packed)
- ▶ 4-6 cups tart, pitted Cherries thoroughly drained
- ▶ 1 tbsp. Amaretto
- ▶ 2 tbsp. Butter cut into small pieces
- ▶ 2 Pie Crusts

Combine tapioca, brown sugar, cherries and amaretto in mixing bowl. Let sit while you prepare 1 pie crust in 9" pie pan.

Pour the cherry mixture into the crust and top with butter pieces.

Cover the top with second pie crust. Cut slits into the top, seal the sides and flute. Cover edge with aluminum foil to prevent from burning.

Bake at 425° for 35-45 mins or until crust is golden brown and juice begins to bubble through the slits of the pie.

Let cool and serve.



SWEET & SOUR CHICKEN STIR FRY

Submitted by Braden Daley, Hartford 2015

Yield: 2-3 servings

Prep time: 10 mins

Cook time: 15 mins

Total time: 25 mins

- ▶ 2 Chicken Breast (good sized pieces)
- ▶ Brown Rice
- ▶ ¼ cup Sweet and Sour Sauce
- ▶ 2 tbsp. Olive Oil
- ▶ Vegetables (red onion, snap peas, red/green pepper, mushrooms, sprouts, ect...)
- ▶ Garlic Powder
- ▶ Fresh Garlic (if desired)
- ▶ Onion Powder
- ▶ Salt
- ▶ Pepper

Cut raw chicken into small pieces and chop vegetables.

Heat up some (about 2 tbsp.) of the olive oil on medium heat.

Add chopped red onion and diced garlic. Cook until the onions are soft.

Add the rest of the vegetables and chicken.

Season chicken and vegetables with salt, pepper, onion and garlic powder.

Add ¼ cup of sweet and sour sauce (more or less to taste)

Cook until vegetables are tender and chicken is cooked all the way through.

Serve over brown rice.

RUSSIAN FILLED CABBAGE ROLLS

Submitted by Vic Kuryunny, Drexel 1996, Deb Kuryunny, HQ Staff

Yield: 15-20 rolls

- ▶ 2 28oz cans Roma Tomatoes
- ▶ Reserve 1 cup Juice
- ▶ 1 tbsp. Brown Sugar
- ▶ 1 tbsp. Lemon Juice
- ▶ 1 tbsp. Worcestershire Sauce
- ▶ 1 medium Onion
- ▶ 3 medium Carrots
- ▶ 1 lb. Ground Beef
- ▶ 1 beaten Egg
- ▶ ¼ cup Milk
- ▶ 1 tsp. Salt
- ▶ 1 tsp. Black Pepper
- ▶ 1 tbsp. Dried Onions
- ▶ 1 tbsp. Minced Garlic
- ▶ Prepared Rice
- ▶ Cabbage

Microwave a 3 ½ lb head of cabbage in a plastic bag for 10 min. Let rest.

Prepare ½ cup Jasmine rice in reserved 1 cup tomato juice until juice is absorbed.

Puree the tomatoes, and then add brown sugar, lemon juice, Worcestershire Sauce.

Set aside.

Finely chop onion and carrots.

Add chopped vegetables to ground beef, beaten egg, milk, salt, black pepper, dried onions, garlic, prepared rice.

Combine thoroughly.

Core the cabbage and carefully remove cabbage leaves.

Coat the bottom of a medium sized roaster pan with ½ cup of tomato sauce and 2 or 3 large cabbage leaves.

Using approximately ¼ to 1/3 cup of the ground beef mixture, place at core end of leaf, fold in sides, and roll up. Place in roaster pan. Continue with remaining leaves and filling.

Pour tomato sauce over all.

Cover pan and bake in a preheated 400° oven for 1 hour.

Lower oven temperature to 350° and bake an additional 30 minutes.

Uncover pan, increase temperature to 500°, finish baking for 20 minutes.



EASY CHICKEN CASSEROLE

Submitted by Toby Smith, Richmond 1983, with thanks to his wife Debbie

Yield: 6 servings

Prep time: 10 mins

Cook time: 35 mins

Total time: 45 mins

- ▶ 6 Chicken Breasts (thin, thawed)
- ▶ 4 slices Prosciutto
- ▶ 5 oz fresh Spinach
- ▶ 8 oz fresh Mushrooms (sliced)
- ▶ 1 ¼ oz Lipton Recipe Secrets savory herb with garlic soup mix
- ▶ ½ cup White Wine

Preheat oven to 375°.

Spray a 13/9" pan with Pam.

Put 2 layers of chicken in pan, cover with prosciutto, top with spinach, sprinkle with a little kosher salt and coarse black pepper.

Top with mushrooms.

Whisk together olive oil, wine and savory herb envelope then pour over everything.

Lay a piece of foil over (not tight).

Bake for 30 minutes.

Top with cheese and bake for 5 minutes more.



HERB-ROASTED SWEET POTATO WEDGES

Submitted by Khiem Tran, VCU 2014

Yield: 4-6 servings

Prep time: 15 mins

Cook time: 45 mins

Total time: 1 hour

- ▶ 4 medium-sized Sweet Potatoes (use a mixture of regular, purple, and/or Japanese sweet potatoes for variety)
- ▶ 4 tbsp. Olive Oil
- ▶ 1 tbsp. chopped fresh Rosemary (or 2 teaspoons dried)
- ▶ 1 tbsp. chopped fresh Thyme (or 2 teaspoons dried)
- ▶ 2 tsp. ground Cumin
- ▶ 1 tsp. of Crazy Jane's Seasoning Salt (or regular salt)
- ▶ ½ tsp. freshly Ground Black Pepper (or regular pepper)

Preheat oven to 375°.

Scrub sweet potatoes and chop off their ends. Cut potatoes in half and then again lengthwise into mini-wedges.

Chop rosemary and thyme into tiny pieces. (You can get the fresh "poultry pack" of spices in the produce section of your local grocery store). In a small bowl, mix herbs with olive oil, cumin, salt, and pepper. Coat potatoes and toss in a large mixing bowl.

Grease a couple of cookie sheets. Spread potatoes out in a single layer. Roast until tender (about 45 minutes).

Sprinkle extra salt on top to taste. Enjoy!



PULLED PORK

Submitted by Kevin Zufelt, Ursinus 2011

- ▶ 3-5 lb. Pork Shoulder Roast (ask for the one for pulled pork. If the pork is on the bone, I leave it whole and cook it longer. If the pork shoulder is boneless, I cut into large chunks and cook for less time.)
- ▶ 1 Onion, quartered
- ▶ 3-4 Carrots, peeled and cut into large chunks
- ▶ 1 14.5oz can Chicken Broth
- ▶ ½ cup Brown Sugar
- ▶ ¼ cup Apple Cider Vinegar

Dry pork roast with paper towels. Sprinkle liberally with salt and pepper. Brown the pork on all sides in hot oil. Set aside.

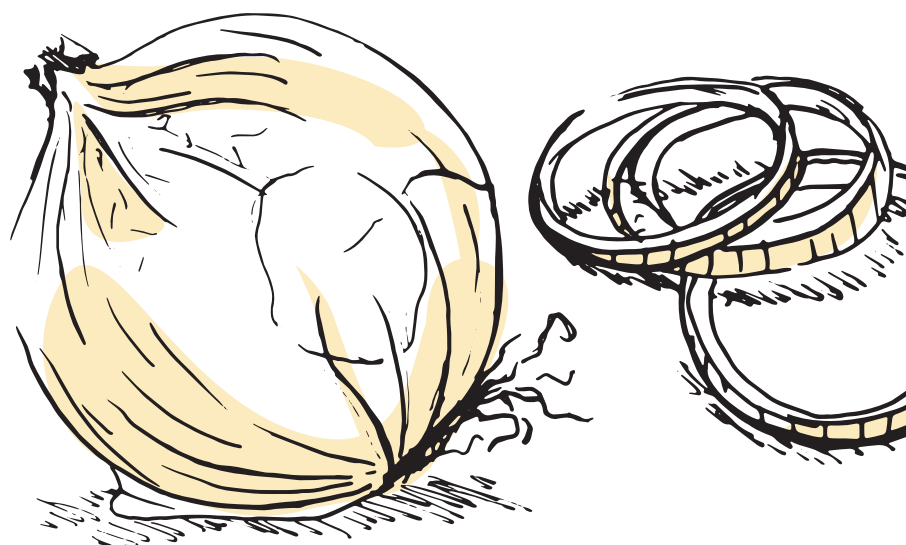
Place onion and carrots in pan and saute for 5-10 minutes, until the onions are softened. Add the chicken broth, brown sugar, and apple cider vinegar. Bring to a boil, and let boil for 5 minutes reducing it some.

Add the browned pork and liquid/vegetable mixture to the slow cooker. Cover and cook on low for 4 hours (for boneless pork) or until the meat shreds easily with two forks.

Take the pork out and shred the meat, removing fat. Strain the cooking liquid. I will chill the strained liquid so the fat rises and hardens on the top. Remove that fat layer and add back to the pork.

I make this ahead of time, and freeze smaller portions of the pork in the cooking liquid. Reheat, with the cooking liquid.

To serve, use tongs to place pork on a roll. Add sharp provolone cheese, roasted red peppers and Uncle Louie Sauce. Yum! ❖





Providing a Lifetime of Opportunities

STATE OF THE FOUNDATION

THIS ISSUE OF THE MALTESE CROSS FOCUSES on Phi Kap Brothers making their marks in the culinary arts field. You may be wondering how the Phi Kappa Sigma Foundation fits within this broader theme. Well, aside from my prodigious ability to consume food and drink, I can sum up the connection in one word: opportunities.

The closest I came to a culinary career was helping to plan and cook dinner for Brotherhood Nights or taking late-night inventory of the kitchen pantry and refrigerator. I also developed an affinity for onions. Regardless of your chosen field of endeavor, there is no doubt that skills you learned or honed, and/or connections you made, while an undergraduate Member of Phi Kappa Sigma have served you well in your career.

Attending college and joining our Fraternity provided each and every one of us the opportunities to learn, grown, lead, contribute, collaborate, build, explore and to better ourselves as Men of Honor. For some, these opportunities led to careers in finance, real estate, accounting, sales, recruiting, marketing or running a small family owned business. For others, like the Brothers featured in this issue of the *Maltese Cross*, it led to careers in the food and beverage industry.

The Foundation supports these opportunities through the granting of scholarships, funding of Men of Honor and other leadership and management initiatives, as well as through assistance in producing the *Maltese Cross*. While the all-volunteer Foundation Board of Trustees provides excellent stewardship of your donations through its money management and funding decisions, there is more the Foundation wants to accomplish in furthering its

mission of supporting the Fraternity and its Members. The Foundation currently provides scholarships and funding support in excess of \$150,000 per year, but wants to increase that amount; especially as it relates to the granting of scholarships. However, we need your help to increase our grants and scholarships, and to implement new initiatives being discussed by the Board.

If you are a current or past donor, I thank you for your support and sincerely hope you will continue to support the Foundation and the Fraternity. If you have not donated to the Foundation in the past, I invite you to become part of the team by making a donation, no matter the size. If you would like to discuss how your current donation, or planned giving, can benefit the Fraternity, its Chapters and its Members, please do not hesitate to contact either myself or Executive Director Tim Schug.

I look forward to meeting as many of my Brothers as possible at Grand Chapter in Chicago, and together we can share a meal and raise a glass of our favorite beverage to the Black and Old Gold.

Fraternally,

Robert J. Burnett, Washington State 1991
President, Phi Kappa Sigma Foundation

FOUNDATION BOARD

Robert J. Burnet
President
Washington State 1991

Lonny Boeke
Vice President
Carthage 2000

Roy Freeman
Secretary
Washington State 1983

Allan M. Cameron
Treasurer
Denver 1962

Peter J. Nichols
Executive At Large
Washington 1990

Douglas L. Cox
Executive At Large
Pennsylvania 1968

Christopher T. Benis
Washington 1984

David du Pont
Pennsylvania 1967

Paul Finazzo
UC Riverside 1984

Walter H. Jaeger
North Texas 1997

Joseph B. Moidl II
Wisconsin 1994

Kevin L. Palmer
UC Riverside 1984

Ronald W. Siggs
Washington 1982

Jay Wurz
Washington State 1994

Ways You Can Support the Foundation

EACH YEAR, HUNDREDS OF BROTHERS SUPPORT PHI KAPPA SIGMA THROUGH A CONTRIBUTION TO THE PHI KAPPA SIGMA FOUNDATION.

Annual Fund

Many Brothers donate throughout the year as part of our annual giving program. Gifts can be made securely online at www.pks.org/donate or mailed directly to the International Headquarters (the enclosed donor envelope has been provided for your convenience). Most Foundation donors do not direct the use of their annual gifts. This allows them to be allocated to the areas of most need. Brothers who donate as part of the annual giving program are recognized in the *Maltese Cross* each year. Brothers who donate at least four years in a row or at least \$10,000 in their lifetime receive special recognition.

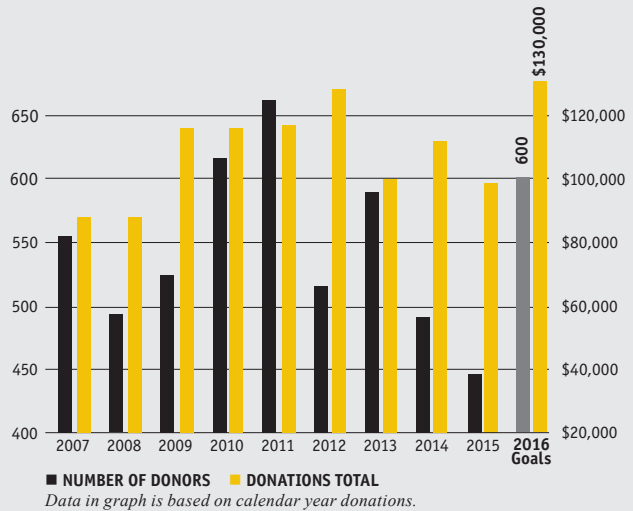
GIVING LEVEL	AMOUNT
Diamond Skull Club	\$2,500 +
Platinum Skull Club	\$1,000 - \$2,499
Golden Skull Club	\$750 - \$999
Silver Skull Club	\$500 - \$749
Bronze Skull Club	\$250 - \$499
1850 Club	\$18.50/month (\$222 total)
Anniversary Member	\$165
Honor Roll	\$100 - \$249
Donor	Up to \$100

Stellis Aequus Durando Society

In order to recognize those Brothers who give to the Foundation on a consistent basis, ensuring that it will be "Equal to the Stars in Endurance," we have created the *Stellis Aequus Durando Society*. Any Phi Kap who has donated at least four consecutive years, no matter what giving level, will be recognized in the Roll of Donors as a society member as long as they continue to donate.

Founders' Circle

In order to recognize those Brothers who have made significant donations to the Phi Kappa Sigma Foundation, we have created the *Founder's Circle*. Members have donated at least \$10,000 in their lifetime (one or multiple gifts).



Mitchell Society

Mitchell Society members are those Brothers who have included Phi Kappa Sigma in their estate plans through Bequests, Insurance Policies, Endowments, Charitable Gift Annuities, and Charitable Remainder Trusts. Mitchell Society members understand the importance of ensuring that Phi Kappa Sigma's programs and services are available far into the future. Gifts such as these allow individuals and families to invest in and support Phi Kappa Sigma, guaranteeing its success for future generations. Please go to www.pks.org/donate or contact the International Headquarters for more information on the Mitchell Society and planned giving.

Matching Gifts

Many companies have a matching gift program that can multiply your support and make your gift go further! Please ask your company's human resources representative for the necessary forms to send with your gift.

Courtyard of Brotherhood

Alumni and undergraduates alike continue to support the Fraternity by purchasing a brick to go in the Courtyard of Brotherhood. The bricks are engraved with their name or the name of another Brother. More than 400 engraved bricks have already been placed in the Courtyard of Brotherhood, and that number continues to increase annually. The cost of the brick is \$150 and represents a tax-deductible donation in that amount.

Please contact the International Headquarters at staff@pks.org or 610.469.3282 for more information on how you can support Phi Kappa Sigma.

FOUNDERS' CIRCLE

The following individuals or groups have donated a minimum of \$10,000 in their lifetime. The gifts may be one or multiple.

Donald F. Craib, UCLA 1949
 John J. Curley, Dickinson 1960
 David B. du Pont, Pennsylvania 1967
 James R. Favor, LLC
 Charles Fazio, Ohio State 1949
 John L. Finalyson,
 Franklin and Marshall 1964
 Robert C. Forney, Purdue 1948
 Joseph B. Moidl, Wisconsin 1994
 Peter J. Nichols, Washington 1980

Douglas W. Opicka, IIT 1997
 Neil J. Principe, Cornell 1967
 Boyd Lee Spahr III*, Dickinson 1963
 David C. Spraker*, Wisconsin 1951
 Ronald C. Stephens, UCLA 1963
 Benjamin F. Taylor, Illinois 1999
 Roderick M. Williams*, Washington 1961

* deceased

FOUNDATION SCHOLARSHIP SPONSORS

The following Brothers have made a donation of at least \$5,000 in any calendar year, at least \$15,000 over two consecutive calendar years, or \$25,000 in their lifetime. We thank them for their generosity by sponsoring a Foundation Scholarship in their name during their lifetime.

Allen M. Cameron Jr., Denver 1962
 Richard Correz, UC Riverside 1994
 David B. du Pont, Pennsylvania 1967
 Edward L. Flom, IIT 1954
 Herbert F. Harvey*, MIT 1942
 Norman R. Lindskog, IIT 1959
 John A. Murray, Denver 1957
 Peter J. Nichols, Washington 1980
 Douglas W. Opicka, IIT 1997

Robert P. Petrowski, Wisconsin 2001
 Ghery D. Pettit*, UC-Berkeley 1946
 J. Karlem Riess*, Tulane 1933
 William B. Rozzi, Purdue 1980
 Timothy A. Schug, IIT 2007
 Carroll K. Simons*, IIT 1932
 David C. Spraker*, Wisconsin 1951
 Roderick M. Williams, Washington 1961

* deceased

2015-2016 FOUNDATION SCHOLARSHIP WINNERS

For the 2015-2016 Academic Year the Phi Kappa Sigma Foundation awarded over \$65,000 to our undergraduate Brothers.

Initiated undergraduate Brothers were eligible to apply for two types of scholarships with the awards being distributed based on the following methodology:

Need-Based Scholarships:

- ▶ 50% Financial Need
- ▶ 50% Scholastic Achievement

Participation-Based Scholarships:

- ▶ 50% Chapter/Campus/Community Involvement
- ▶ 50% Scholastic Achievement

Leadership Grants

- ▶ 50% Essay Submission
- ▶ 50% Scholastic Achievement

2015-2016 Winners:

R. Chase Adams, Georgia Tech 2016
 Quinton D. Addington, VCU 2016
 Maxwell D. Anderson, North Texas 2017
 Trever A. Andrews, UC Riverside 2017
 Cody M. Armstrong, North Texas 2016
 Dakota K. Betts, IIT 2016
 Andrew S. Bobbitt, North Texas 2017
 Julian D. Cagnazzo, Minnesota 2016
 Andrew P. Capone, Ursinus 2016
 Bryan P. Carter, Ursinus 2016
 Dylan T. Cassidy, Penn State 2017
 Zachery G. Charlton, South Alabama 2016
 Andrew B. Creppel, Texas 2017
 Benjamin L. Dobkin, Princeton 2016
 Andrei Dumitru, IIT 2018
 George Garcia, UC Riverside 2016
 Felix K. Goldmann, NYU 2017
 Trevor Gurganious, UC Riverside 2018
 Matthew W. Hammen, NYU 2016
 Andres Herrera, Kenyon 2017
 Michel S. Kabbash, Michigan State 2017
 Nathan D.H. Kang, Washington 2016
 Alexander C. Keiser, Penn State 2017

Jonathan S. Kustina, Ursinus 2016
 Peter F. Lamothe, Clarkson 2017
 Austin C. Longwell, UC Riverside 2016
 Brady C. Lucas, Penn State 2018
 Blake H. MacQueen, Alabama 2017
 John C. Meyer, South Carolina 2017
 Dmitri A. Mirakyan, Texas 2017
 Hunter A. Molnar, Penn State 2017
 Zamil Narsing, Texas 2017
 Kenny H. Ngo, South Alabama 2018
 Dmytro Petrov, NYU 2016
 Erick Pinos, MIT 2017
 Shayann Ramedani, Ursinus 2018
 Clayton T. Reis, TCU 2017
 Steven G. Reuther, Kenyon 2016
 Alexander J. Shapiro, NYU 2016
 Todd J. Sherman, Wisconsin 2016
 Sukhewanpreet Singh, NYU 2016
 Jeremy C. Swiatek, Michigan State 2018
 Jan Samuel G. Tan, NYU 2017
 Max J. Williams, Texas 2016
 Henry L. Willshire, Ursinus 2016

Scholarship Applications are available on February 15th and are due by April 15th of each year. For more information please go to www.pks.org/scholarship or email staff@pks.org.

Roll of Donors

Diamond Skull Club (\$2,500+)

Christopher T Benis
Washington 1984
Richard S Correz
UC Riverside 1994
Mark A Lindstrom
Northern Illinois
1974
Timothy A Schug
IIT 2007
Ronald C Stephens
UCLA 1963
Roderick M Williams*
Washington 1961

Platinum Skull Club (\$1,000 - \$2,499)

Lonny Boeke
Carthage 2000
Allan M Cameron
Denver 1962
Robert M Carmichael
Stanford 1959
Douglas L Cox
Pennsylvania 1968
John J Curley
Dickinson 1960
Bruce S Curtiss
Georgia Tech 1977
David B du Pont
Pennsylvania 1967
Paul F Finazzo
UC Riverside 1984
Christopher S Lee
South Carolina 1989
Joseph B Moidl
Wisconsin 1994
Mark M Montgomery
West Chester 1990
Peter J Nichols
Washington 1980
Kevin L Palmer
UC Riverside 1984
Neil J Principe
Cornell 1967
Hamilton F Smith
Richmond 1983
Larry Sonsini
UC Berkeley
John E Voss
UCLA 1948

Golden Skull Club (\$750 - \$999)

Clement P Barbazon
New Orleans 1975
Robert J Burnett
Washington State
1991
Raymond JS
Ruybe, II
Randolph-Macon
2013

Silver Skull Club (\$500 - \$749)

Steven Carbone
UCLA 1984
Rodney L Chaffee
Ohio State 1997
Robert A Cornog
IIT 1961
Roy A Freeman
Washington State
1984
Michael C Friel
Penn State 1977
Kent D Fyfe
Washington 1992
Reynold R Hagel
Washington 1980
Glen A Harper
Michigan State 1968
Leonard C Isaacs
Oregon State 1960
Walter H Jaeger IV
North Texas 1997
Bill Jenkins
Vanderbilt 1958
Keith T Kallberg
MIT 1968
Craig Pettengill
UCLA 1975
Robert T Ratcliff
Tulane 1964
Peter D Robison
Cornell 1972
Donald Root
Washington 1962
John D Rosdeutscher
Vanderbilt 1987
Terry L Schultz
North Texas 1980
Ronald W Siggs
Washington 1982
William W Sitz
UCLA 1969
Stephen Windom
Alabama 1971
Charles V Strimlan
Pennsylvania 1967
Paul E Sullivan
Maine 1966
David L Tett
Duke 1991

Bronze Skull Club (\$250 - \$499)

Douglas C Allen
Maine 1962
Randy G Ausmus
TCU 1963
Henry W Bellefleur
Northwestern 1979
Arthur S Ellis
Tulane 1948
Charles D Fitch
Oklahoma 1970

Jeffery P Franklin
Louisiana Tech 1975
Jason A Froehner
Carthage 2001
Floyd E Garrison
Ohio State 1948
Terry D Gilson
Michigan State 1969
Kenneth J
Holzscheiter
Pennsylvania 1963
Curt D Klinkner
Wisconsin 1995
Sandor J Kovacs
PhD, MD
Cornell 1969
John H Lester
Georgia Tech 1951
Jesse C Livesay
Ohio 1967
Robert M Lowe
Oklahoma 1948
Dominic J Magnabosco
IIT 1994
William D Mallard
Alabama 1989
Samuel R Mask
Radford 1990
Thomas M Moody
South Carolina 1991
Kevin M Olsavsky
Penn State 1986
Michael W Palladino
Georgia Tech 2003
Walter H Parduhn
IIT 1965
Arthur L Piccone
Dickinson 1955
William G Quinn
Vanderbilt 1997
Richard J Rosebery
Purdue 1957
Marc Sanders
Washington 1984
Stuart G Schultz III
TCU 2000
Gregory R Schuneman
Minnesota 2013
Thomas E Shea
IIT 1986
Charles E Shinholser
South Carolina 1954
Thomas B Sleeman
Illinois 1954
Edward C Stahl
Purdue 1957
Charles V Strimlan
Pennsylvania 1967
Thomas T Vining
Tulane 1969
Douglas P Whitworth
Washington 1976

1850 Club (\$18.50/month; \$222 total)

Otto Grupp
Penn State 1951
Frank B O'Neil
Alabama 1975
Stephen E Robison
Cornell 1974
Khiem Q Tran
VCU 2014

Anniversary Member (\$164)

William E Brewer
TCU 2001
C. G Brown
South Carolina 1985
Myles F Butner
Oregon State 1956
Charles W Cairnes
IIT 1966
Jeryl W Cordell
IIT 1966
Robert E Danforth Jr.
Washington 1977
Sam R Day
TCU 1965
Derek Dodd
Washington 1994
William G Dosse'
IIT 1958
S. K Dunn
UCLA 1980
Mark K Fitch
Oklahoma 1980
Paul B Gilbert
St. Lawrence 1972
Harry J Glass
Tulane 1946
Mark A Hall
Purdue 1988
Lee J Hesler
Purdue 1964
Paul A Kirk
Drury 1966
Ronald R Lake
Alabama 1983
Stephen M Mencik
Georgia Tech 1981
Donald V Murray
Potsdam 1985
Joseph N Offenbecher
Kansas 1950
Larry R Rainwater
IIT 1967
Peter R Simpson
Toronto 1969
Frederick W Slagle
Dickinson 1972
Jeffrey M Soltz
McDaniel 1998
Alvin L Sudduth
Georgia Tech 1970

Patrick Sweeney
Georgia Tech 1964
Herbert A Taylor
Duke 1959
Leslie W Tripp
TCU 1978
John S Wells
Kenyon 1961
J. R Wilson
Kansas 1950
Robert E Wojcik
Purdue 2003

Honor Roll (\$100 - \$249)

Dennis J Aigner
UCLA 1959
Richard N Anderson
UCLA 1957
James S Balent
Franklin and Marshall
1991
Keith A Barker
UCLA 1966
John C Becker
Richmond 1979
Edward B Berninger
MIT 1950
Robert G Bise
UCLA 1959
William H Boezinger
Stanford 1955
James S Boyle
Pennsylvania 1954
David Branton
Duke 1979
Nelson F Brown
UCLA 1965
Thomas H Brownlee
Illinois 1957
Chet C Buckenmaier Jr.
Penn State 1959
Alexander J Callow
IIT 2004
John W Campbell
West Virginia 1964
Davis S Cangalosi
Pennsylvania 1960
James L Cartwright
North Texas 1962
Christopher M
Chandler
North Texas 1995
Guy W Chipman Jr.
Northwestern 1941
Donald W Comstock
Purdue 1954
J. S Counts
South Carolina 1966
Kent W Curtis
MIT 1981
Willis R Dadukian
Denver 1952
Timothy P Daly
Towson 1977

Michael J Dashnaw
Clarkson 1991
Charles P Davidson
Purdue 1942
John H Davis
Cornell 1958
James R Day
IIT 1964
Matthew A DeVries
UC Riverside 2010
Jesse L Dunn
North Texas 1959
Brendon M Egan
UMass Lowell 2010
Edward Elasio
Pennsylvania 1982
Brian M Fait
Wisconsin 1996
Roy H Feinberg
Oregon State 1975
Charles S Fiske
Cornell 1956
James J Fitzsimmons
Alabama 1968
Roland W Flemming Jr.
Oregon 1961
Tomasz B Folta
IIT 2011
John L Freeman
Tulane 1967
Hector J Garcia
SW Texas State 1991
Paul A Garcia
UCLA
David W Gates
Maine 1954
Jack K Gilden
Vanderbilt 1970
David I Gold
UC Riverside 1994
Hubert Grane
Denver 1958
Douglas F Grelk
IIT 1976
Michael Hamm
Ohio 1970
William C Harms
Seton Hall 1998
Peter C Hastings
South Carolina 1964
Harold Hatfield
Potsdam 1980
Nicholas D Holstein
Pennsylvania 2004
Christopher M Horich
Virginia Tech 2000
Raymond L Horn
Washington 1953
Jeffrey G Horvat
Carthage 2002
Michael F Houlihan
Georgia Tech 1985
Larry J Hubacka
Washington 1962
Charles L Hudson
Maryland 1943

Roll of Donors *continued*

- | | | | | | |
|--|---|---|---|---|--|
| John R Huttl
UCLA 1984 | Paul J Kelly
Potsdam 1990 | David R McDonald
Kansas 1958 | James M O'Donnell
Northern Illinois
1972 | Daniel S Stanley
Kansas 1978 | George M Baurhenn
Franklin and Marshall
1945 |
| Frederick L Ingoldsby
Illinois 1990 | Gary G Kemp
Ohio State 1964 | Sherrill R McDonald
Purdue 1949 | James M Othrow
Ohio State | Robert D Starr
Georgia Tech 1963 | Earl E Beelman
Tulane 1958 |
| Ronald H Jack
IIT 1955 | John B Kirkley MD
Texas 1944 | Terence J McElligott
Illinois | Arnold Page
Kenyon 1962 | Thomas C Stavredes
Richmond 1959 | Charles M Bierfeld
Northwestern 1966 |
| Michael L James
Vanderbilt 1995 | James A Largay
Denver 1964 | Thomas G McMillan
Randolph-Macon
1963 | David Palermino-
Muraca
Johnson & Wales
1995 | A. J Steichen
UCLA 1952 | Stanley J Bizub
Randolph-Macon
2014 |
| Niels M Johnsen
Tulane 1967 | Donald L Lassiter
Tulane 1979 | Stephen W Mezzell
Alabama 1980 | Alan C Pease
Maine 1952 | Hugh W Stubblefield
Radford 1987 | Krishen S Blows
IIT 2014 |
| Eric J Johnson
Washington State
1994 | Frederic S Le Clercq
South Carolina 1959 | Paul E Mogridge
Oklahoma 1959 | Monroe E Pederson
UCLA 1950 | Mrs. Robert C
Sutherland
Pennsylvania 1948 | Frank D Boensch
Vanderbilt 1958 |
| Morgan B Johnson
Georgia Tech 1993 | Lincoln B Lockhart
Northwestern 1968 | Sully W Moore
UCLA 1987 | Rick J Pekala
Rutgers NB 1993 | Ronald J Talbert
South Carolina 1978 | J. T Bouchier
Texas 1967 |
| Martin L Johnson
Ohio State 1956 | Oivind Lorentzen
MIT 1943 | Harry A Moreen
IIT 1957 | Henry C Perkins
Stanford 1957 | Michael D Tobman
Albany 1994 | Gilbert O Bowling
Maryland 1957 |
| Robert C Kaltenbach
Texas 1971 | Arthur J Ludwick
Stanford 1962 | Donald L Murray
Wisconsin 1953 | Stephen G Peterson Jr.
Georgia Tech 1952 | Richard K Tuten
South Carolina 1955 | Thomas H Branch
Denver 1952 |
| David E Kane
Pennsylvania 1968 | John T Mackessy
Kenyon 1982 | Alfred L Nicely
Ohio State 1957 | Ghery D Pettit
UC Berkeley 1946 | Christopher J Twomley
Albany 1993 | Michael J Brockway
Potsdam 2010 |
| Alfred L Kasid
IIT 1957 | Mayes D Mathews
West Virginia 1966 | Robert Norment
Texas 1951 | Christopher Plano
Johnson & Wales
1993 | Charles P Umstead
North Carolina -
Chapel Hill 1957 | Chad R Brown
Clarkson 1996 |

Scholarship Sponsor Highlight

Brother Roderick M. Williams graduated from the University of Washington in 1961 with a B.A. in Business. Upon completion of college, he entered the United States Army as an officer in the Medical Service Corp. where he commanded a Mobile Army Surgical Hospital (M.A.S.H.) with the 5th Infantry Division at Fort Carson, Colorado. Upon leaving the service, Rod worked briefly in the insurance industry and then went to work with GM Nameplate, Inc. in 1966.

Rod was the Alpha Upsilon Alumni Association President from 1966-1969. He was the Alpha Upsilon Endowment Association President from 1970-1974. He won the E. Lloyd Nelson Outstanding Alumnus Award from the Alpha Upsilon Chapter in 1972. In 2000, Rod was elected Grand Tau of our Fraternity and before that served as Secretary of the Phi Kappa Sigma Foundation from 1995-2000. He was also the Past President and Treasurer of the Ballard Kiwanis Club and Past President of the Ballard Kiwanis Memorial Foundation. Along with a few other individuals, Rod and Don Root, Washington 1961, purchased controlling interest in GM Nameplate in 1976. Rod served as President of the company prior to retiring in 1999.

Even after his passing, Rod continues to support the Phi Kappa Sigma Foundation through an annual bequest on behalf of his estate.

- | | | | | | | | | | | | | | |
|--|-------------------------------------|---|---|-------------------------------------|---|--------------------------------------|-------------------------------------|---------------------------------|-------------------------------------|--|---|---|--|
| George E Prochaska
Kansas 1952 | Robert E Vogel
Cornell 1952 | James B Wagoner
UCLA 1986 | L. C Weatherby
TCU 1958 | Thomas J Welsh
Pennsylvania 1974 | Jay A White
Pennsylvania 1970 | James T Wilburn
Georgia Tech 1956 | Robert J Witham
Kansas 1964 | Floyd G Wood
UCLA 1953 | Theodore V Wood
Kenyon 1989 | Donald J Wright
Penn State 1981 | Terry P Yarbrough
Richmond 1962 | Thomas Young
Franklin and Marshall
1986 | Holmes Murphy and
Associates LLC |
| Robert A Pruden
Iowa 1989 | Christopher T Quinn
IIT 1957 | James R Raatz
Purdue 1973 | Kenneth M Repholz
IIT 1955 | Robert I Rhoads
Drexel 1990 | A. C Richardson
North Carolina -
Chapel Hill 1969 | Steven W Richey
Alabama 1977 | John W Robb
Texas 1969 | Edward L Roberson
Duke 1957 | David P Rose
Kenyon 1981 | Glen L Ryland
UC Berkeley 1949 | Cal M Sandman
Pennsylvania 1948 | Kenneth J Shaw
SW Texas State 1988 | Earl J Shreiner
Franklin and Marshall
1963 |
| Roger J Siegel
Michigan State 1966 | David M Smith
New Hampshire 2006 | Jay S Smith
Maine 1967 | Gary A Spivack
Randolph-Macon
1972 | Peter J Srere
Dickinson 1986 | Daniel S Stanley
Kansas 1978 | Robert D Starr
Georgia Tech 1963 | Thomas C Stavredes
Richmond 1959 | A. J Steichen
UCLA 1952 | Hugh W Stubblefield
Radford 1987 | Mrs. Robert C
Sutherland
Pennsylvania 1948 | Ronald J Talbert
South Carolina 1978 | Michael D Tobman
Albany 1994 | Richard K Tuten
South Carolina 1955 |
| George M Baurhenn
Franklin and Marshall
1945 | Earl E Beelman
Tulane 1958 | Charles M Bierfeld
Northwestern 1966 | Stanley J Bizub
Randolph-Macon
2014 | Krishen S Blows
IIT 2014 | Frank D Boensch
Vanderbilt 1958 | J. T Bouchier
Texas 1967 | Gilbert O Bowling
Maryland 1957 | Thomas H Branch
Denver 1952 | Michael J Brockway
Potsdam 2010 | Chad R Brown
Clarkson 1996 | Rocco D Bruno
Denver 1964 | Lawrence J Burda
IIT 1960 | David E Carmack
Richmond 1959 |
| James R Carr
Michigan State 1950 | Matthew Carroll
Rowan 1995 | Brian D Cherry
Washington 1983 | James P Chong
Tulane 2003 | Brady M Cole
Texas 1958 | John L Coleman
Richmond 1971 | James Cook
Bryant 2008 | Christopher W Cook
TCU 2009 | Stephen H Cowles
Purdue 1960 | William J Dale
Duke 1958 | Christopher R Davis
Alabama 1992 | Larry H Dennis
Maryland 1963 | David F Deterich
West Virginia 1964 | John W Dietz
St. Lawrence 1990 |
| Gary S Doman
IIT 1986 | Earl P Dupre
Ohio 1954 | George N Echko
Purdue 1970 | Todd W Engle
Washington 1997 | Fred T Erskine
Washington and | Alvin K Ahlers
Maine 1962 | John A Anaple
Ohio State 1955 | Samuel L Anderson
Kansas 1970 | J. F Baker
Maryland 1958 | John W Bates
Georgia Tech 1961 | Glenn J Battaglia
MIT | | | |

Donor
(\$100 and less)

Dear Foundation Scholarship Donor,

I wanted to thank you personally for your contribution to the Phi Kappa Sigma Foundation scholarship fund. This year, I was fortunate enough to have been selected to receive one of these scholarships; a gift I can truly say has made a big difference for me this year.

I am a junior Chemical Engineering student, and as I approach graduation, I have needed to spend a significant amount of time focused on recruiting, networking, and planning for post-graduation employment. Being a recipient of this scholarship has allowed me to give that effort my full focus without hurting my financial position (as I have been able to work fewer hours).

Phi Kap has done more than help financially however. The experience of founding the Sigma Chapter at the University of Texas has been by far the most profound leadership and personal development experience in my life. This, too, has hugely helped me in my job search, and I believe the professionals that I have networked with can see the results in my character as a Man of Honor.

I hope I too can one day give to the Foundation, and aid future young men on their journeys as you have aided me. I cannot thank you enough for your generosity and your belief in this great organization. This note merely scratches the surface of my gratitude.



Fraternally Yours,
Max Williams 2015
University of Texas at Austin

Jefferson 1964
Clayton P Fisher
Kansas 1964
Robert E Freeman
South Carolina 1958
Kent R Frohme
West Virginia 1959
Maxwell J Fugere
VCU 2013
Roger T Fynan
South Carolina 1979
John Geiser III
Tulane 1959
Norman D Gibson
UC Riverside 1986
Charles A Gray
Washington 1965
F. A Greenwood
Ohio State 1970
Jeffery K Guiler
Franklin and Marshall
1971
Ronald A Hahn
West Virginia 1960
John A Hall
Washington and Lee
1951
Stephen R Hayes
St. Lawrence 1980
David R Heath
Cornell 1989
Ronald M Heck
Maryland 1965
David L Heck
Kenyon 1953
Nancy Hershgold

(Fraternity Friend)
Roy F House
Vanderbilt 1961
Matthew E Hurff
McDaniel 2003
Mark C Ingram
Alabama 1968
Raymond A Ioanes
Kenyon 1940
David B Jansky
St. Lawrence 1959
Jeffrey H Jennings
Denver 1968
Jeffrey L Johnson
Ohio
J. W Johnson
Pennsylvania 1962
G. R Johnston
Washington 1955
David C King
British Columbia
1958
Ronald J Kline
Randolph-Macon
1971
Anthony A Knuckey
IIT 2013
Larry A Kuns
Ohio 1964
Victor Kuryunny
Drexel 1996
Lorne L Langlois
Michigan State 1956
Thomas J Lasater
Kansas 1979
Vincent Latini

Seton Hall 1989
John D Livie
UCLA 1971
James M Lynch
Northern Illinois
Daniel C Lyons
Towson 2001
Joel D MacClaren
St. Lawrence 1977
Robert L Madison
Michigan 1962
Michel D Marceau
King's 2001
John F McClelland
Dickinson 1964
James D McMahon
Franklin and Marshall
1960
Jordan L Mendel
Pennsylvania 2009
Richard S Mulligan
Kenyon 1973
Robert Murdocca
Pennsylvania 1991
Robert J Pacan
Drexel 1998
Robert O Pasnau
Illinois 1956
Orion M Pelausa
VCU 2011
John M Penrose
Ohio 1964
Elbert Pugh
Randolph-Macon
1958
Daniel L Rea

North Carolina -
Chapel Hill 1986
Jacob S Rosenbacher
Indiana 2016
Arthur H Saxon
Pennsylvania 1960
Joseph J Scarpa
Seton Hall 1988
Patrick K Schlomas
IIT 2015
Walt A Shannon
St. Lawrence 1963
Thomas B Shoebottom
Oklahoma 1956
Richard Short
Randolph-Macon
1955
James D Sinanis
Duke 1992
E. F Skilton
Penn State 1970
James T Smith
Denver 1959
Jonathan P Smith
Randolph-Macon
1995
Paul A Stayskal
Richmond 1963
John E Stealey
West Virginia 1963
Ennolls A Stephens
Cornell 1963
Alexander W Stephens
Northwestern 1987
Ronald C Stranix III
Ursinus 2012

C. D Swope
Ohio 1967
Richard F Taylor
North Carolina -
Chapel Hill 1950
Donald E Teller
Duke 1959
J. K Thompson
Ohio State 1948
Eric Toscano
Rowan 1998
John K Totten
Oklahoma 1960
Vernon D Ummel
Oregon 1958
Michael A Valentine
St. Lawrence 1982
Peter R Walters
Bryant 1959
Ernest G Weating
Washington and
Jefferson 1950
Jesse M Wesberry
Vanderbilt 1975
John L White
UC Riverside 1989
Jeffrey S Wiley
Virginia Tech 1980
David P Witmer
Franklin and Marshall
1955
Peter G Zurowski
IIT 2014

From *Fighter* to *Dancer*



PENN STATE Brady (second from left) poses at THON with some of his Brothers

by Ryan Cerone, Clarkson 2014

COULD YOU IMAGINE WHAT GOES THROUGH a child's mind when they are stricken with a terrible disease? Chances are taking every opportunity to raise funds and awareness was not the first thought. However, for Brady Lucas, Penn State 2018, this was the only option when he was a child. When Brady was eight years old, he was diagnosed with a form of blood cancer known as Acute Lymphoblastic Leukemia. Brady went from a happy, playful, energetic, young boy to one that would have to endure chemotherapy and radiation treatments. Luckily, when he began his treatments, THON entered Brady's life.

THON is a student-run dance marathon that takes place annually on Penn State's campus. In fact, this particular dance marathon is the largest student-run philanthropy effort in the world. Since its inception at Penn State University, it has raised over 100 million dollars for the organization known as the Four Diamonds Fund, a charity whose sole purpose is to help support the lives and treatment of all childhood cancer patients who go to the Penn State Hershey Children's Hospital for treatment. Thanks to this organization, Brady's family did not see one bill during the course of his years of treatment. Brady's journey took him through three years of chemotherapy that culminated in remission in 2008. Unfortunately, this was not the end of this road.

In 2010, Brady relapsed and the journey seemingly started all over again, but once again he wouldn't be alone. During Brady's first brush with cancer he received support from the Puerto Rican Student Association, but in 2011, Phi Kappa Sigma would enter his life as his second THON sponsor. Brady is once again cancer free thanks to not only the support of THON and the Four Diamonds, but due to a bone marrow transplant from his brother. When I spoke to Brady, he told me when it came time to go to college he would have 4 major goals:



Chapter News

1. Go to Penn State University
2. Join Phi Kappa Sigma
3. Become the THON Chair for Phi Kappa Sigma
4. Represent Phi Kappa Sigma at THON and be a THON Dancer

Brady accomplished these first three goals in quick fashion, and as THON Chair, he has blown past philanthropy years out of the water. Brady's fundraising success came by partnering with his own benefit event, The Brady Lucas Golf Outing, which just completed its 8th year.

At the time the interview was conducted with Brady, the money raised for THON from Phi Kappa Sigma had exceeded \$50,000. Brady will have the opportunity to complete his fourth goal this semester when he takes the floor at THON.

THON is a student-run dance marathon that takes place annually on Penn State's campus. In fact, this particular dance marathon is the largest student-run philanthropy effort in the world.

Bravery and courage can be exemplified in many different ways. At Phi Kappa Sigma we are always asked to look inside ourselves and ask the hard question, what is courage? Without a shadow of a doubt we can look at Brady Lucas and know that looking at a fight head on and conquering it with unwavering resolve is an excellent example. On the weekend of February 19th 2016 when this year's THON commences, Brady will demonstrate true courage by following his dreams and continuing to fight. ✦

CARTHAGE COLLEGE

This past year, the Gamma Gamma Chapter at Carthage College welcomed 14 men of honor in our brotherhood, the second largest new member class in the history of our Chapter. Our efforts in growth are matched by our efforts in involvement on campus. We've increased our relations with the Greek Council on campus and have suggested 2 members for Executive Board, both of which received their nominations. In an effort to increase our philanthropic involvement on campus, we began a new Suicide Awareness week for the second week of September. While this event began in the fall of 2015, we're looking forward to evolving the event into a much more substantive week of events in the coming years. We want our alumni to know that we are still in the works of welcoming an Alumni Association for Gamma Gamma. As a part of this process, our alumni, both recent and founding fathers of our Chapter, as well as our active members are working tirelessly to ensure correct channels of communication, influence, and assistance.

CLARKSON UNIVERSITY

2015 has been a great year in terms of philanthropic efforts at the Beta Chi Chapter at Clarkson University. We implemented a Shave-a-Skull event in tandem with our Relay for Life team where students raised money to see brothers shave their heads for cancer awareness. This was complimented by our famous Fried Oreo Sales at the event which allowed us to raise over \$300 for cancer awareness organizations. In the fall, we continued our



PRINCETON Brothers at Princeton participate in a Pie-A-Guy Fundraiser

philanthropic success by hosting a Day of the Dead event with a sorority. It was both a somber moment to remember those who have passed and a festive way of celebrating life as a whole. The sisters of Kappa Delta Chi and the general Clarkson community greatly enjoyed the event and were excited for the chance to try some ethnic Mexican food. Overall, service is a huge part of being a member of Beta Chi and we are proud to say we excelled at it this year. Aside from service, Beta Chi has focused on improving its performance on the Mitchell Chapter Standards. Reflecting back on past award winning MCS performances, we have organized Chapter operations and are focused on meeting requirements. Officers have received checklists and are diligently working to make 2016 a year of which all members of Beta Chi can be proud.

FRANKLIN AND MARSHALL COLLEGE

This past year, the Zeta Chapter at Franklin and Marshall College raised almost one-thousand dollars for various philanthropic organizations, including the Leukemia and Lymphoma Society. We enjoyed the support we received from our fellow Greek organizations on campus for our philanthropic

efforts and thoroughly enjoyed helping LLS set up their Light the Night walk at Clipper Magazine Stadium. We continue to make academic excellence a habit and once again feature one of the highest GPAs of all Greek organizations at F&M. Our Chapter continues to enjoy the improvements made to our chapter house last year and wishes to thank our Alumni House Corp. for their continued efforts in making our chapter house a better place to live and function as a brotherhood.

GEORGE MASON UNIVERSITY

This year, we are extremely proud to say that the Gamma Xi Chapter at George Mason University fundraised and donated \$10,000 to the Leukemia and Lymphoma Society. More importantly, we made a commitment to the LLS to fundraise that \$10,000, making a contractual obligation to reach our goal. What makes us more proud than anything to be Brothers of Gamma Xi is the fact that our Chapter decided that helping end blood cancer is more important than our wallets. We felt we have a responsibility to do better for anyone experiencing the hardships of cancer. We went from last year's \$6,700 to fundraising almost \$8,000, covering the last \$2,000

straight from our pockets. Being a Man of Honor isn't about being able to fundraise a lot of money, it's about knowing what's right and putting aside everything else. Already, we are pumped up for philanthropy next year. We want our alumni to know that even though the Chapter changes from year to year, we still have a common and apparent bond as Phi Kaps. We would love to have you around. Come out to philanthropy events, alumni events, or even just to grab lunch and chat. We want to get to know alumni! Proud to be Men of Honor!

INDIANA UNIVERSITY

This school year the Delta Pi Chapter at Indiana University developed and awarded our first ever freshman scholarship of \$500. We found that the scholarship really helped our recruitment and we currently have 28 new members for the fall. We also managed to host our second Light the Night philanthropy and raised over \$7,000 for the Leukemia and Lymphoma Society. Our brothers also participated in IU Dance Marathon and collectively raised over \$19,000 for Riley's Children's hospital. We would like our alumni to know that even though we are off campus we are still active on campus and very focused on achieving our highest recruitment numbers in the upcoming spring semester.

KENYON COLLEGE

The Theta Chapter at Kenyon College has succeeded in increasing our size for our fourth consecutive year, as well as successfully maintained the highest GPA of any Kenyon fraternity. We've also expanded socially, gaining a new crop of members which includes national champion swimmers, lacrosse players, and lab researchers. We've also made excellent philanthropic contributions through benefits and community outreach. Our place on campus has never been better! We want our alumni to know that we strive to be a presence on campus that exudes inclusiveness above all. Our principal criteria for new members are kindness, humor, and strength of character. This mentality has led to a tolerant, diverse, and overall pretty cool

group of guys that we are proud to call friends.

MASSACHUSETTS INSTITUTE OF TECHNOLOGY

It has been a great year for the Alpha Mu Chapter at MIT. Several of our brothers, led by Erick Pinos '17, have started an effort to feed the homeless in Boston. Our house hosted a macaroni and cheese dinner to help the initiative, and Brother Pinos continued raising thousands of dollars for this cause. We also affirmed our commitment to stopping sexual assault by co-sponsoring a screening of "The Hunting Ground" alongside MIT's Violence Prevention and Response Office. Finally, our alumni have been in the news. Louis Perna '09 and Ben Harvatine '12 were selected to the Forbes 30 Under 30

that aims to build upon the achievements of the previous year. Our Chapter achieved high praise in philanthropy within the Greek community thanks to the participation of our brotherhood alongside the members of Delta Gamma and Lambda Chi Alpha. Thanks to our combined efforts, we raised the most money out of any Greek team for the American Cancer Society during MSU's annual "Greek Week" competition. Our Chapter is looking forward to this year's Greek Week competition to continue our philanthropic efforts with new partners. On top of those achievements, Beta Delta Chapter is pleased to announce that our collective chapter GPA is the highest it has been since 2014. The Brotherhood is very proud of this achievement and

brothers of Delta Phi also had a successful event with Story Pirates, commenting on stories written by many aspiring young writers in elementary school. The semesters were also capped off by a smooth transition of officers. We want our alumni to know that our graduating seniors will be going on to big things in very different fields ranging from consulting, to technology, to music production.

PENNSYLVANIA STATE UNIVERSITY

The Psi Chapter at Penn State University accomplished a total of 2,049 hours of community service, along with participating in our homecoming, Greek Sing, and THON activities. We have doubled our donation total for the IFC Dance Marathon benefiting pediatric cancer, reaching almost \$50K! Our house has also exceeded academically with an average GPA at 3.1 and a new emphasis on study hours and grades. Many of our young alumni brothers have received accomplished positions at IBM, Wells Fargo, AIG, Goldman Sachs, JP Morgan, and many more. Athletically, the brothers won first place in the annual Kicks for Courtney philanthropy soccer game and donated over \$1,000 in cash donations to other philanthropies. Brothers have been directly involved in the Inter-fraternity Council, Homecoming committees, Greek Sing committees, and not to mention the numerous brothers involved in THON committees and THON captains. Overall, our brotherhood has accomplished many achievements academically, philanthropically, athletically, and socially. We are a vital and integral part of the nation and world of Skulls. We are a part of a bigger network, one that has their core values emerged in the ideals of brotherhood, unity, and secrecy. We had the 125th anniversary of Psi Chapter at our house in State College this past semester. Our Chapter is extremely grateful to have met some of the brothers from different classes throughout the years at Penn State. We encourage any brother to reach out to us about house history, or to discuss the current state of the brotherhood.



HARTFORD Members of the Hartford Chapter show their support by attending a Breast Cancer Walk in Bushnell Park in Hartford, CT.

list this year, and Richtopia named Ben the 13th most powerful entrepreneur under 25. We've been working hard to enrich the Back Bay community through our homeless-feeding initiative and our work towards sexual assault prevention. Internally, we remain tight-knit and driven. We've raised our academic bar through a study session program, but brothers still find the time to start companies and do important research.

MICHIGAN STATE UNIVERSITY

This spring, the Brothers of Beta Delta Chapter have returned to campus under new leadership

looks to continue to improve in our academics. To the alumni of Beta Delta Chapter, please know that our Brotherhood is currently in a strong and optimistic state. Our active members are currently working to increase the opportunities for alumni involvement in the coming year. Keep an eye out for events and reach out to Brother Thuan Nguyen if you would like more information.

NEW YORK UNIVERSITY

This past year, the Delta Phi Chapter at NYU added 12 new brothers to our Chapter, two in the spring and 10 in the fall. The

PRINCETON UNIVERSITY

The Beta Chapter at Princeton University has been thriving, initiating 16 new members within the past year. We welcome these new brothers to help us carry on our traditions, such as our annual pie-a-guy philanthropy fundraiser at the Commiversity event, an effort that raised almost \$2,000 for the Leukemia and Lymphoma Society. This year's prime social event for Beta Chapter was a black and old gold themed semi-formal at the Colonial Club. We also saw two of our intramural teams (Dodgeball and Basketball) make the playoffs this year in addition to a big win in the annual University Dodgeball tournament. The Chapter looks forward to another prosperous year going into 2016. Still in the face of the freshmen rush ban, we always look towards alumni to help us keep our Chapter strong and we welcome anyone who wants to return for a visit. Please contact ben.dobkin@gmail.com if you are not on our Chapter's alumni email list.

RADFORD UNIVERSITY

As a group, the Beta Omega Chapter at Radford was able to raise over \$600 to benefit the Leukemia and Lymphoma Society from our Light the Night event that we held on campus. Additionally, we started a Shave a Skull fundraiser that also allowed us to support LLS. We have strengthened our ties with our alumni a great deal over the past two years, and we strive to communicate clearly and accurately what the Chapter is doing so that the alumni are able to see where we are at as a Chapter and where we are headed. We are very pleased with the progress of our Chapter and couldn't have done it without the help of our great alumni board.

RAMAPO COLLEGE OF NEW JERSEY

Over the last six months, Delta Omicron at Ramapo College has been committed to a community service based mission. The Chapter started the year participating in the Center for Student Success's Welcome Week Field Day, which integrated the new freshman with the Greek leaders. We then co-

sponsored the first annual Dash 4 Diabetes with proceeds benefitting the American Diabetes Association. Finally, at the close of the fall semester, the Brothers held a successful clothing drive donating hundreds of pounds of clothes to a local Mahwah church. This spring and into next year, Delta Omicron will be continuing our focus on community service, recruitment, and raising money for the Leukemia and Lymphoma Society.

RANDOLPH-MACON COLLEGE

The Tau Chapter at Randolph-Macon College has had a great revival! We have grown our membership by 400% and we participated in several philanthropy events including, but not limited to "The Big Event", IFC Chilie Cook off, and have completed several independent service projects. In the fall, we were also able to host several tailgates and work alongside the R-MC Greek community. We look forward to a very productive Spring and thank all of the HQ staff, new members, and Randolph-Macon College alumni who have provided aid or guidance. Our chapter is growing and our presence on campus is also gaining momentum. We appreciate all of our local Alumni's efforts and contributions both, financial and by way of participation. Our goal as a chapter is to reach out to the alumni on a local and national level. From our undergraduate chapter, we thank all alumni greatly for carrying on the traditions and teaching us how to become Men of Honor.

RUTGERS UNIVERSITY - NEW BRUNSWICK

The Gamma Sigma Chapter at Rutgers has achieved a good amount this semester, surpassing our activeness of the previous school year. In the beginning of the school year, with the help of our alumni, we celebrated the 25th anniversary of the Gamma Sigma Chapter founding. Over 65% of our entire chapter's members were in attendance. We held four different philanthropy events with different sororities, all of which were very successful. We ran our own blood drive in our Chapter house, where we were able to donate 53 units of blood in just under six hours. Also, our Chapter has stepped



OKLAHOMA Brothers from the Oklahoma Chapter visit a local nursing home to hand out presents to the residents.

up our recruitment, adding more rush events that have attracted a higher number and quality of potential new members. We are also in line to have the highest amount of active members ever with the addition of our new pledge class in this coming spring. We want our alumni to know that our Chapter is now stronger than ever. Never has there been a point in time where everyone's vision to achieve greatness and be the best we can be has been so closely aligned. The alumni would be happy to know that we are holding our Chapter to higher standards, while increasing our reputation positively on campus.

TEMPLE UNIVERSITY

2015 was a year of learning and improvement for the Delta Psi Chapter at Temple University. The spring semester's rush was very successful, with all of the new members fitting into our Chapter's culture very well. As a young Chapter, our remaining founding fathers were seniors and had the responsibility of performing most of our officer positions. Our Beta took over the role of Iota due to our brother's early graduation, and did a fantastic job educating the new members. However, poor operations in other areas caused us to not meet the minimum

requirements in the Mitchell Chapter Standards for the 2014-2015 school year. This semester, our new Alpha has brought structure and transparency to our meetings, allowing us to work as a team to plan successful events. We were able to organize successful philanthropy events, tailgates, brotherhood dinners, and socials. We look forward to an even more successful year in 2016! The Delta Psi Chapter follows our motto: gentlemen pursuing and inspiring excellence. On an individual level, we all strive to meet our ambitious academic, professional and personal goals. As a brotherhood, we are improving our ability to make the whole greater than the sum of the parts.

TEXAS CHRISTIAN UNIVERSITY

Our Beta Theta Chapter at TCU of 108 men is pleased to say we have achieved a 3.0 cumulative GPA this past fall semester. We are defending champions in intramural basketball and we finished second in intramural football. During the fall we had our formal event in Dallas. Our second social event was held in Fort Worth with two sororities, Pi Beta Phi and Kappa Alpha Theta. This spring semester we are looking to have a beach volleyball philanthropy event to benefit the Leukemia

and Lymphoma Society. We have the largest Phi Kap LinkedIn page to date with over 200 alumni members. The Beta Theta Chapter at TCU is focused on improving alumni relations by establishing contact for future business connections. Join our LinkedIn page today because we are looking to have a big alumni event this spring. The Beta Theta Chapter would like our alumni to know that we are continually trying to improve our relations with alumni to benefit each other within the business community. Our LinkedIn page is growing and a great way to stay connected, join today!

TULANE UNIVERSITY

During the fall semester 2015, The Mu Chapter at Tulane University initiated three new brothers, all of whom are dedicated, loyal, and honorable individuals. Three new members initiated during this period is more than any other pledge class Mu has initiated during the fall in the past four years. Furthermore, our presence on campus has increased substantially, and we have become one of the most competitive fraternities amongst those a Tulane, largely due to increased organization, social and philanthropic presence, and brothers willing to set time aside for rush. So far this has been

an exceptional semester for Mu chapter, and we are looking to keep this momentum moving forward in the spring 2016. We want our alumni to know that our Chapter has experienced rough patches in the past few years with recruitment. We have moved beyond this, and are beginning to expand in the right direction, with honorable, dedicated brothers filling our ranks.

UNIVERSITY OF MASSACHUSETTS – LOWELL

This past semester, the Gamma Upsilon Chapter at UMass Lowell initiated our biggest class since spring 2013. In October, we held our 25th Annual Cardboard City Fundraiser where we raised over \$900 for the Lowell House of Hope. Our Chapter also joined other Greek Organizations at UMass Lowell in participating in St. Jude Up till Dawn where we raised \$600 for the kids of the St. Jude Children's Research Hospital this past fall. A brother from our Chapter, Bryan Ritchie, has been elected the Vice President of our school's Greek Council Executive Board. Our Chapter is also looking forward to participating in the Relay for Life philanthropy in the spring.

UNIVERSITY OF ALABAMA

This year, the Alpha Kappa Chapter at the University of

Alabama continued to grow its membership following the best fall rush in recent years. We have continued our partnerships with the RISE center and expanded our philanthropy efforts by attending multiple local events and hosting some events at our house. We were also able to have a great showing at our local LLS Light the Night walk and made a donation on behalf of our Chapter. Alpha Kappa has also created a new website which can be found at www.uapks.org. We are continuing our efforts to move into a bigger house and have started fundraising and working on strengthening our rush to help accomplish this. We have been steadily growing our numbers, improving our GPA, increasing our philanthropy efforts and maintaining our strong brotherhood. We would like to invite our alumni to join us for our annual Crawfish Boil prior to the A-day game in April. Any alumni are encouraged to contact our Alumni Chair, Sander McKnight, at (205) 246-3700. We hope you have been getting our newsletters and thank you for your support.

UNIVERSITY OF CALIFORNIA – LOS ANGELES

After much hard work and determination, the Alpha Psi Chapter at UCLA is honored to be re-chartered and officially

be recognized as a Chapter of Phi Kappa Sigma once again. The process of colonization and chartering is not an easy one and the members of Alpha Psi have experienced what it is like to build and cement a brotherhood and learned what it means to be a Phi Kap through it. Everyone has risen up to this challenge and it could not have been done without the work and dedication of every Brother. While this does mark a huge moment in Alpha Psi history, we all recognize the work cannot stop here and we look forward to making Alpha Psi an honorable and respectable house on the UCLA campus. To the Alpha Psi alumni, we would like to thank you for your continued support through our entire journey. We couldn't have made it this far without your mentorship and advice. Thank you for allowing us to join a lasting brotherhood and to make the most out of collegiate experience.

UNIVERSITY OF CALIFORNIA – RIVERSIDE

This year was an excellent transitional period for the Beta Rho Chapter at UC Riverside. Given an oversaturation of campus, Chapter, and FSIC events, our Chapter has simplified its calendar with a belief similar to the effect of "less is more". In terms of philanthropy, the Brothers of Beta Rho organized their first Light the Night Walk on our Riverside campus, while also continuing without our yearly Dodge-Ball Tournament. Academically speaking, Beta Rho has maintained its standards for scholastic performance and has seen a rise in both cumulative and term GPA among the active members. We have even removed the holdover policy from our chapter bylaws. Our fundraising chairs have extended their efforts to include other organizations in joint/collaborative events, which positions Beta Rho as an organization that embraces and fosters Greek unity on campus. We would like alumni to know that Beta Rho welcomes any Phi Kappa Sigma alumni to familiarize themselves with our Chapter on a personal level—stop by any time!



GEORGE MASON *George Mason Brothers and friends supporting our national philanthropy at an LLS Light the Night Walk.*



NEW ORLEANS Brothers of the University of New Orleans Chapter cheer on Brother Travis Avery (second from left) at a UNO basketball game.

UNIVERSITY OF HARTFORD

This has been the busiest, yet most rewarding year in our two years of being recognized as the Delta Omega Chapter at the University of Hartford. Each year we continue to grow and learn new things. Over the past year, the Delta Omega Chapter was awarded "Chapter of the Year," beating out seven other well established groups at UHart. Additionally, our President, Marc Mancini was awarded, "Outstanding Chapter President" and Patrick Carlucci was awarded "Future Greek Leader" by the University of Hartford. These accomplishments can all be contributed to great organization and dedication within the Chapter as well as collaboration with groups outside the Chapter, such as the National Headquarters and Inter-fraternal Council. We look forward to building upon the recent success and continuing to grow as a while establishing a solid foundation. As our alumni base continues to grow, more events are in the works in order to keep our alumni in touch with our active brothers. Our alumni have

been the foundation upon what we continue to build on and the brothers of Delta Omega would like to say, Thank you.

UNIVERSITY OF ILLINOIS

2015 was a great year for the Rho Chapter at the University of Illinois. We were able to reconnect with many alumni at last year's golf outing in August, our average Chapter GPA has increased to 3.06 for fall 2015, we were able to secure far better living arrangements for 2016, and we were able to start a new annual philanthropy event (Dunk-A-Cop) on campus. We are currently at 23 members and are hoping to continue growing this spring. If you want to help out or just want to reconnect with the fraternity be sure to come by for homecoming in 2016 and/or contact our current alumni chair Zack Proefriedt at zpro03@gmail.com for upcoming events and information.

UNIVERSITY OF MARYLAND – BALTIMORE COUNTY

This year was one of growth for the Delta Sigma Chapter at the

University of Maryland – Baltimore County. To start, we increased our outreach by starting a new philanthropy event called Dunk-a-Cop! For this event we sold donuts and had Brothers and campus police take turns sitting in a dunk tank giving the students an opportunity to plunge them into the freezing waters! In addition to this philanthropy event, we also hosted more fundraising events to help the Chapter grow financially. Finally, we had our largest pledge class in the past four years and got a bunch of great new guys. We are growing in numbers yet we still pride ourselves on the closeness of our brotherhood. Gathering more members has allowed us to put together more events on campus, making our presence as a top fraternity on campus better known.

UNIVERSITY OF MINNESOTA

Since chartering in 2013, the Alpha Sigma Chapter at the University of Minnesota has made great strides in establishing our longevity as a Chapter. This past year was no different! Many of our successes were logistical,

including huge growth in philanthropic events as well as increasing organization efficiency. We planned and executed a date auction in cooperation with the Delta Upsilon Chapter on campus, and raised around \$700 for the Leukemia and Lymphoma Society. This has been our largest donation yet, and we have every intent to pursue further philanthropic success. As for internal functions, we've managed to create a more productive Chapter meeting atmosphere than ever before. We also had a complete renovation of our Chapter bylaws, which can be entirely attributed to the determination and commitment of our members. Overall, we have set ourselves up for a great new year, and we are excited to build powerful relationships and memories that will last a lifetime! Alpha Sigma Chapter found its roots in a casual, accepting atmosphere. Many of our members never considered Greek life before joining, but found their fit with us exclusively. Now that we've established ourselves organizationally,



MEN OF HONOR LEADERSHIP INSTITUTE 2016: BLACK MOUNTAIN, NC

alumni can expect innovative recruitment ideas and high levels of commitment and ambition from our members!

UNIVERSITY OF OKLAHOMA

The Omicron Chapter at the University of Oklahoma had several huge accomplishments this past year. 2015 was our first year competing in University Sing (U-Sing) with the wonderful ladies of Alpha Gamma Delta. Also we placed first in board and second in float presentation for homecoming, thanks to the amazing efforts of our Brothers and the ladies of both Delta Delta Delta and Gamma Phi Beta! Several of our Brothers from Omicron also visited Rambling Oaks, a local nursing home in Norman, bringing a little extra fun and excitement for the holidays with candy and Brother John Lemon donning a Santa Claus outfit and passing out presents to the residents. Omicron Chapter also brought in nearly twenty new members from the combined spring and fall rush of 2015, which doubled the number of active members, and we plan to further exceed those numbers in the coming year! We would like to welcome our newest members to our Fraternity; Cole O'Dell, Colton Sulgrove, Corbin Harris, Dragos Nicolae, Michael Nhin, and Parker Hattey; and congratulate Corbin, Parker, Cole and Dragos on being elected to the positions of Sigma, Upsilon, Phi and Event Theta, respectively.

UNIVERSITY OF SOUTH ALABAMA

It has been a great year for the Beta Mu Chapter at the University of South Alabama. We now have a house and have seen a huge boost in Chapter morale! After putting in work for our philanthropy events in the fall, we managed to beat our previous year's goal in money raised for LLS! We would love to meet more alumni brothers! Please don't hesitate to get in contact with us if you are ever in the Mobile, AL area.

UNIVERSITY OF SOUTH CAROLINA

The Alpha Eta Chapter at the University of South Carolina continued its growth since re-chartering in 2009, completing another successful year of recruitment, and ultimately initiating another 42 Men of Honor. The growth of the Chapter enabled us to raise nearly \$10,000 for philanthropy and with the Chapter average of 10 service hours per brother we logged well over 1000 hours this past year. The Alpha Eta Chapter would like to express our gratitude to our alumni for their continued support. We all gratefully enjoyed the reunions and seeing y'all together embodies our motto "Once a Phi Kap, Always a Phi Kap."

UNIVERSITY OF TEXAS – AUSTIN

Sigma Chapter at the University of Texas-Austin had an eventful year in 2015. The Chapter has flourished since our re-chartering in spring of 2013 and we continued

to grow, both in numbers and as a brotherhood. In April of 2015, Sigma Chapter hosted our first ever Dunk-a-Cop fundraising event and raised over \$1,000 for the Leukemia Lymphoma Society. Over the last year, Sigma Chapter has increased its relations with our neighboring chapters in the south. We were able to build strong relationships with the Omicron Chapter at the University of Oklahoma through the annual Red River rivalry game in Dallas and a road trip with our newly initiated Epsilon Class. Finally, Sigma Chapter acquired a house for the first time since 2000. Sigma Chapter looks forward to the great things that will come from the house in the future, and the further expansion of the chapter throughout 2016 and beyond. We want our alumni to know that we are working to continue to expand our alumni network. We are planning to host an Alumni Weekend this spring to reconnect Sigma Alums to the current Brothers. Sigma is growing and improving every year, and we want our alumni to observe our progress first hand.

UNIVERSITY OF TORONTO

The Alpha Beta Chapter at the University of Toronto achieved the Distinguished Chapter Award through our combined efforts and hard work. Additionally, we continued our philanthropic initiatives to the Leukemia & Lymphoma Society by ensuring all members participated in

volunteering and community events. The basement of the Chapter's house has been a renovation project that has had a slow start in past years, but thanks to our hustle and the alumni's help this year we are approaching its completion. What once was a boring and dingy basement is going to become a comfortable and enjoyable lounge area. We would like our alumni base to know that we are actively working on winning the Founder's Cup and would like to thank them for their generous contributions, which have led the Chapter to its current state.

UNIVERSITY OF WISCONSIN

Last spring, the Alpha Theta Chapter at the University of Wisconsin capped off our best ever recruitment year when nine new brothers initiated, bringing the total to 17 overall. This almost doubled our Chapter size, bringing in a wave of new energy and ideas. We continued our tradition of going camping for our summer planning retreat, in a location away from campus in order to foster preparedness and pre-planning and so our members can disconnect from electronic devices to simply enjoy the outdoors and grow in brotherhood. We followed this up by taking first place in the first annual Delta Dodgeball tournament supporting St. Jude's Children's Hospital (Hosted by Delta Delta Delta Sorority), winning a donation to LLS as a result. Finally, we overhauled our bylaws



CARROLL K. SIMONS INSTITUTE 2015: AMELIA, OH

to streamline our executive board structure and had the best social event participation in recent memory, with events ranging from skiing to ballroom dance lessons. We would like to thank our alumni for their generous support to send several Brothers to Men of Honor, which will benefit the entire Chapter. We are also proud of the new alumni mentorship program, and we look forward to helping it continue to grow.

URSINUS COLLEGE

The Delta Rho Chapter at Ursinus College accomplished a number of different things in 2015, but the most important was certainly our involvement in the "It's On Us" Campaign on our campus. "It's On Us" is a campaign against sexual misconduct on college campuses. Our Chapter was responsible for running tables at the "Take Back the Night" and Victim support workshop held as part of "It's On Us" as well as helping to recruit people to take the pledge to actively prevent sexual misconduct on the "It's On Us" webpage. In addition to our work with this campaign, we also added a clause on sexual assault to our Chapter by laws to help hold brothers accountable. The active brothers of the Delta Rho Chapter of Phi Kappa Sigma continue to uphold the values of our Brothers before us. Please be in touch with any concerns or needs you may have. "Once a Phi Kap, Always a Phi Kap."

VIRGINIA COMMONWEALTH UNIVERSITY

Six years after chartering, the Delta Upsilon Chapter at Virginia Commonwealth University had an amazing Chapter Founder's Day where we got together with Director of Member Services Ron Stranix and rewrote our vision and mission, which really hyped everyone up. Afterwards, we had a huge turn out with our alumni and had a great dinner at Sweet Teas Southern Cuisine in downtown Richmond. We look forward to bringing in new members during our recruitment period and add more life to our Chapter as we prepare for our biggest event on campus, DunkACop, now in its fifth year at VCU. A special thanks to our Chapter Advisors Orion Pelousa and Khiem Tran for their support and help.

COLONIES

TARLETON STATE UNIVERSITY

For many of our guys in the Tarleton State colony, this past year was an introduction to Greek life and what it means to be fraternity men. We had our first experiences with rush week, philanthropy events, socials, and came away with valuable experiences that will help us going into a new year. A month into our first full semester on campus, we donated a portion of our rush shirt sales to a student

battling both Multiple Sclerosis and the high cost of doctor bills that accompany such a disease. This past semester we went on two chapter visits, connecting with the brothers of the University of North Texas and University of Texas - Austin. Our focus heading into this new year is progressing through the petition process and receiving our charter. Being a colony, we've understandably had our peaks and valleys. There is no doubt in our minds however, that we are in the midst of building something truly special here at Tarleton State. We're not your cookie cutter fraternity where everyone looks and acts the same. We have a diverse membership that includes everything from country boys, military servicemen, athletes, and everything in between. Being Men of Honor is something we take immense pride in. We strive to uphold those words and what it means everyday by the way we carry ourselves on and off campus.

WASHINGTON STATE UNIVERSITY

This year, the Beta Psi Colony at Washington State University accomplished much in the philanthropy events we have participated in. Alpha Chi Omega held an event to raise awareness for the Alternatives to Violence of the Palouse. Participating in this event helped raise awareness for healthier relationships in the community. Phi Kappa Theta

also held a fundraiser to help bring about awareness for men's health. By participating in this fundraiser, we gave a donation to benefit further research for prostate and testicular cancer. When tragedy struck the WSU community in the deaths of two young sorority women, Beta Psi responded by hand-making a memorial stone for the gardens of each of the girl's chapters; a reminder of the lives taken and an eternal sign of our friendship and support for the Greek community. We were also fortunate enough to colonize on October 17, as well as become recognized by the Washington State University Inter-fraternal Council. This year we will be working hard to uphold the name of Phi Kappa Sigma by working hard to create a new idea of a fraternity on campus by withstanding our oath to be Men of Honor. By doing all of this we are also working towards obtaining our charter. ✦



Expansion & Growth

THE PLAN:

The first two questions that are always asked are: “Where are we going,” and “Where do we want to be?” These questions have to be asked in order to initiate a plan. Let’s say, for example, we want to reopen a chapter that has been closed for a decade, and the closest chapter to them is over twelve hours away, is that sustainable? Probably not. The reason being; the cost to support the group, and the isolation from other chapters that the group will experience, will cause the members to become disenfranchised and lose sight of what it means to be a Skull.

Our solution is a methodical expansion to connect the chapters together. If we look at the list of schools that we have been accepted to go to (see next page), then you’ll notice there is a pattern. They are all within a few hours of another Phi Kap chapter. One metric that is used, is to populate a state and select schools based on proximity to other chapters. This allows for two or more chapters to be within a decent driving distance, and allows for connected expansion.

The next question that has to be answered is, “Where can we go and is it someplace we want to be?” This question sounds silly, but it has to be asked due to the nature of expansion. Would we like to go back to Northwestern? Yes. Why isn’t it on the plan? The school is closed to expansion for new groups or restarting groups. This is the same predicament with a multitude of other schools at which we used to have chapters. When contacting a school, or being contacted by a school, about expansion, there are metrics, outside of just distance from another chapter, which are measured and then applied.

EXPANSION DECISION METRICS:

- **Proximity of target schools for reopening and expansions**
 - What is the distance from active undergraduate chapters?
- **Average grade point average**
 - Greek students?
 - Non-Greek students?
- **Time since last Phi Kap expansion**
- **Ease of expansion**
 - Is it a campus that Phi Kap can choose to expand to at any time, or is it a campus that is normally closed to expansion that currently has an opening for a brief period of time?
- **Housing requirements**
 - Does the campus require a chapter facility and/or do we already have a chapter facility at the expansion site?
- **Percentage and population size of non-Greek males**
- **Average chapter sizes for the existing Greek organizations**
- **Alumni Support in the area**
 - Number of Alumni within 25 miles
 - Alumni who are willing to donate their time to being a chapter advisor

Mark Logsdon, North Texas 2012

Before I dive in to the meat of this article, I feel it is important for me to introduce myself. My name is Mark Logsdon, the Director of Growth and Engagement for Phi Kappa Sigma Fraternity. I joined staff in the fall of 2012, knowing my main goal was to create a model to use at campuses in order to expand, and grow, the organization. After being put on the largest campus in the state of Texas, the University of Texas with 52,000 students and counting, I knew that the development of this plan was vital to the success and longevity of the Fraternity. This article is to help our alumni and members understand our expansion methodology and inform you of where we will be expanding to in the next few years.



Using our expansion metrics, Phi Kappa Sigma is able to target schools at which we know we will have success. Just because we used to be there, does not mean we will be successful, especially if we do not have alumni support. For example, going back to more remote locations, such as Florida International University, requires a stronger partnership with alumni who are willing to help that group move in a positive direction. To put it in perspective, think if your chapter was closed and the chance came up to reopen it, would you be involved? Would you help garner

alumni support? The International Fraternity, and myself, want to open our closed chapters, but we need a combination of the school support and alumni support to do it.

Keep in mind, this list continues to grow and is being planned out to 2020 and beyond. If you want to help with the process or know of any men attending these institutions, I encourage you to reach out to me at mlogsdon@pks.org. Let's grow our Fraternity. After all, Skulls help Skulls. ✦

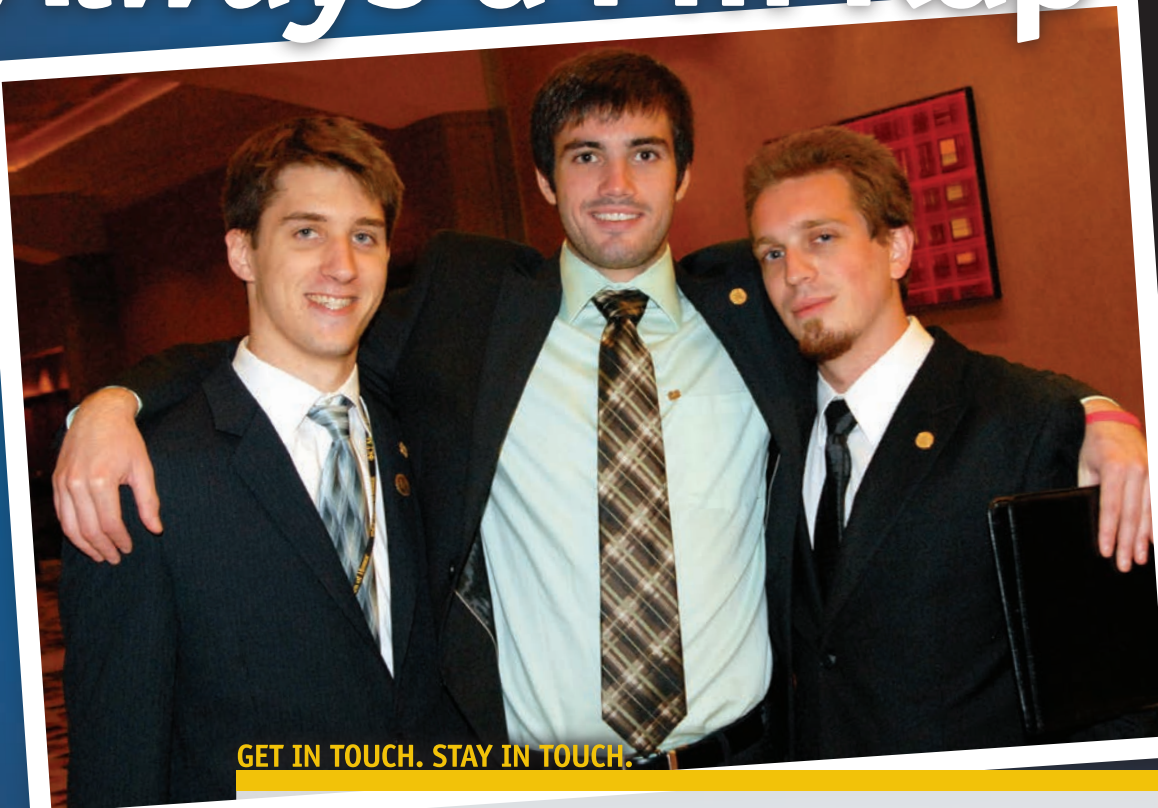
SCHOOLS AT WHICH WE ARE CURRENTLY APPROVED TO EXPAND

- **Texas Tech University**
Lubbock, TX – Fall 2016
- **McDaniel College**
Westminster, MD – Spring 2017
- **University of Maryland**
College Park, MD – Fall 2017
- **University of Iowa**
Iowa City, IA – Spring 2018
- **Auburn University**
Auburn, AL – Spring 2018
- **University of California Berkeley**
Berkeley, CA – Fall 2018
- **Texas State University**
San Marcos, TX – Fall 2018



Phi Kappa Sigma
Two Timber Drive
Chester Springs, PA 19425

ONCE A PHI KAP Always a Phi Kap



GET IN TOUCH. STAY IN TOUCH.

Since the first day we all decided to become Phi Kaps, this motto has been engrained into our minds. We tell folks that being a brother is for life and not just the four years we are in college.

Phi Kappa Sigma is deeply committed to this ideal and we are looking to improve our alumni relations and provide more value to our alumni members. At the 2014 Grand Chapter in Nashville, **an Alumni Relations Committee was formed to explore how we can better support our Alumni from a national perspective.**

If you would like to provide feedback or suggestions on how we can improve your experience, please feel

free to contact the committee via email at alumni@pks.org.



Send us Your Email!
staff@pks.org

Stay up-to-date on Phi Kappa Sigma news and receive invitations to exclusive alumni events.



Become a Fan!
facebook.com/phikap

With more than 200 million users, Facebook is a great resource for keeping in touch or reconnecting with the Fraternity and its members.



Join Our Group!
Search: Phi Kappa Sigma International Fraternity

Whether you are searching for a job, looking to hire, or wish to discuss industry issues, the Phi Kap LinkedIn Group is a great tool.