



# MALTESE CROSS

# EXPANSION

## EDITION

- ▶ OUTSTANDING RECRUITMENT
- ▶ THE DOERS
- ▶ PHI KAP HIGHLIGHTS

# MALTESE CROSS WINTER 2022

VOLUME 161 | NUMBER 1 | THE MAGAZINE OF PHI KAPPA SIGMA

# CONTENTS

## MASTHEAD

**DAVID R. WOLF**  
*Alpha Theta, Wisconsin '99*  
Executive Director

**RYAN EISNAUGLE**  
*Beta Omega, Radford '20*  
Southeast Region Educational Consultant  
Director of Operations

**SEAN COOLEY**  
*Delta Sigma, UMBC '22*  
Midwest & West Region Educational  
Consultant

**JOSEPH P. THOMAS**  
*Alpha Kappa, Alabama '17*  
Co-Editor In Chief

**PANTELIS "PANTS" PATSELIKOS**  
*Beta Xi, UNO '22*  
Southeast Region Educational Consultant

**DYLAN DERAUD**  
*Gamma Mu, TXST '22*  
Co-Editor In Chief  
Expansion Consultant

**TINGALLS GRAPHIC DESIGN, LLC**  
*Madison, Wisconsin*  
Magazine Designer



ON THE COVER  
Photo Credit:  
Isaac Rosenbaum



4

AMBASSADOR  
PROGRAM

13

EXPANSION  
PIPELINE

20

THE MEN WHO  
STARTED IT ALL  
ANDREW ADAMS RIPKA

27

CHAPTER  
UPDATES

## DO YOU LIKE SAVING MONEY?

Phi Kappa Sigma brothers could save money  
with a special discount on car insurance.



**GEICO**  
MEMBER DISCOUNT



[geico.com/greek/phikappasigma](http://geico.com/greek/phikappasigma) | 1-800-368-2734 | Local Agent

A Message from the Grand Alpha	2
Member News	4
"The Doers" Expansion Edition	10
Phi Kap Highlights	18

Phi Kappa Sigma Donor Rolls	22
Chapter News	27
Chapter Eternal	28
Letter From The Editor	33

PHI KAPPA SIGMA  
INTERNATIONAL FRATERNITY  
716 Adams Street Suite A, Carmel, IN 46032  
P: (463) 200-5200 | [www.pks.org](http://www.pks.org) | [staff@pks.org](mailto:staff@pks.org)

REQUESTING PROFILE UPDATES & SUBMITTING MEMBER NEWS:  
To update an address, notify HQ of a member's passing, or to submit news for  
articles, blogs, and social media, please contact Headquarters at [staff@pks.org](mailto:staff@pks.org) or  
by calling (463) 200-5200.

# ✚ 2022 EXECUTIVE BOARD MEMBERS



## GRAND ALPHA

R. Philip Petrowski  
Alpha Theta, Wisconsin '01



## GRAND BETA

Gil Lizalde  
Beta Lambda, Northern Illinois '01



## GRAND THETA

Matt Szarzynski  
Alpha Xi, Purdue University '12



## GRAND THETA

Alex West  
Beta Theta, TCU '21



## GRAND PI

Ron Stranix  
Delta Rho, Ursinus '12



## GRAND TAU

Tim Schug  
Alpha Epsilon, IIT '07



## GRAND SIGMA

Ryan Gilson  
Beta Delta, Michigan State '15

Join the Leukemia & Lymphoma Society's

# LIGHT THE NIGHT

Join the Phi Kappa Sigma  
2022 National Light The Night Team

**BLOOD CANCER STRIKES 1 IN 2 MEN.**

The reality of that statistic and its impact on our brotherhood is unsettling.



The Leukemia & Lymphoma Society® is a global leader in the fight against cancer. Walk with us to celebrate, honor and remember those touched by cancer.

**HELP US REACH OUR GOAL.**

Donate and Fundraise at



NATIONAL PRESENTING SPONSOR OF SURVIVORSHIP & HOPE



Register Today  
[LightTheNight.org](http://LightTheNight.org)





# AMBASSADOR PROGRAM

We want to welcome you to our 2021-22 Phi Kappa Sigma International Fraternity Ambassadors. We have spent countless hours searching, selecting, and inviting seven gentlemen to be part of our revolutionary Ambassador Program. This year, we executed a new rendition of the ambassador program, unlike other years. Past years, participants hopped on zoom meetings to sit and take notes. These gentlemen came from all parts of the country to be in Indianapolis, Indiana to obtain an in-depth analysis of leadership initiatives. Our organization gave them the opportunity to travel to Indiana and visit the Phi Kappa Sigma International Fraternity Headquarters in Carmel, for three days to inherit the program's comprehensive

curriculum. This curriculum is designed to help members become change agents in their chapters and encourage continued engagement with the organization post-graduation. These gentlemen not only got a theoretical education, but also a hands-on approach and application of the learning material.

The Ambassador Program is an extensive three-day experience devoted to helping some of our best chapter leaders make a positive impact on their chapter and the organization.

The program uses action-based training to teach participants to navigate the issues we face as fraternity men and leaders in our communities. ✦

**Scan each QR Code to learn more about our 2021-22 Ambassadors!** →



**MATTHEW PACEWICZ**  
Delta Gamma '23



**SEAN COOLEY**  
Delta Sigma '22



**CHRISTIAN VOLLBERG**  
Psi '23



**CARTER STANSEL**  
Zeta '23



**JAKE SCHERMERHORN**  
Epsilon Gamma '23



**ALEK AHRENS**  
Beta Chi '23



**DYLAN DERAUD**  
Gamma Mu '22





## CARTHAGE FIREBIRDS

When Jordan Ball strolled onto Carthage College's campus, like every first-year student, he had a vision of what college would be like. Jordan wanted nothing but to establish his legacy and make a positive presence at Carthage.

Yet, Jordan didn't expect his legacy would be defined by the fraternity he joined, nor the competitive video game program he created.

More importantly, success did not come without friends, brothers, colleagues, challenges, and time. This timeline all began when he was a first-year student at Carthage College. He came up with the idea that a varsity-level gaming team would represent the firebirds among the elite across the nation. Jordan began creating the petition on a Tuesday. That Friday, he was able to meet with the Carthage administration to pitch the program idea. Jordan was able to hop on a committee and was the only student on the committee as a first-year student.

Unfortunately, the COVID pandemic hit, and he thought his push had met its end. It was not until November of the same year that the committee decided to reconvene and resume their conversations. It was February 21, 2021, when Jordan found himself proposing the Esports program idea to become a full varsity sport by the Board of Trustees of Carthage College. They ended up voting in favor of the program's establishment. Jordan was then placed on the committee to hire a director and start building

the teams of Carthage Esports.

Now having over 50 members, the club has more interested parties than ever before, ready to build for the future. As well as finding the perfect space in the heart of the campus in a renovated facility that includes a lounge and classroom. The key to the space is that everyone can use it for any reason they want – not strictly for the Esports teams. The facility is entirely free to use and is open 12 hours a day, 7 days a week.

The Gamma Gamma chapter has made its mark on this program. You can find its members in all areas of it. As Jordan serves as the program captain for the program, other members like Ben McCurley ('23) and Sterling Rodgers ('24) are game captains. Some other members are invested in the competition broadcasts or facility management ends of the program.

"I wanted to establish my legacy at Carthage. 10 years ago, I could have told you that I was not going to ever start a competitive video game program and achieve the success that it has become. Nor did I ever think that my fraternity brothers would be interested in it as well. It's cool that I can come back to Carthage in the future and see the progress it has made to the entire community." ✨



**From Left to Right:** Sterling Rodgers ('24), Davison Krajcik ('22), Sean Downing ('24), Christian Plonski ('23), Ben McCurley ('23), Kevin Gillmore ('24), Tony Rausch ('24), Jordan Ball ('23), Ray Menarik ('25), Jacen Principato ('25) [Bottom Right]

**Scan the code! →**

**Here you will get to see the real magic behind the Gamma Gamma Gamers at Carthage College. This will give you an in-depth experience of how they are influencing e-sports on their campus!**





# TEXAS CHRISTIAN UNIVERSITY BETA THETA CHAPTER NEW MEMBERS - 39

Our active chapters spent the year in our first year back in-person focusing on recruitment, developing strategies and executing plans for adding members to their respective chapters across the nation. We want to take the time to highlight two chapters who exceeded over the expectations in recruitment throughout the year with the highest numbers for the academic year.

The Beta Theta was able to bring in 39 new members for the 2021-22 academic year at Texas Christian University. The 39 additional members for the year bring the Beta Theta Chapter to 131 current active members. With being the first full year back after the COVID pandemic, the chapter was able to navigate in person events such as in-person initiations, brotherhood events, and classes on campus. ✚



# UC-BERKELEY ALPHA LAMBDA CHAPTER NEW MEMBERS - 31

Our active chapters spent the year in our first year back in-person focusing on recruitment, developing strategies and executing plans for adding members to their respective chapters across the nation. We want to take the time to highlight two chapters who exceeded over the expectations in recruitment throughout the year with the highest numbers for the academic year.

The Alpha Lambda Chapter was able to bring in 31 new members for the 2021-2022 academic year at the University of California – Berkeley. The 31 additional members for the year bring the Alpha Lambda Chapter to 49 current active members. With being the first full year back after the COVID pandemic, the chapter was able to navigate in person events such as in-person initiations, brotherhood events, and even a Super Bowl party at the chapter house. ✚



# the doers

## EXPANSION EDITION

We are here to celebrate our Expansion Edition and our current path moving forward. The Phi Kappa Sigma International Fraternity has taken a driver seat to expansion for the past two years and we believe it is time to highlight the future. The cover of this edition is the spark that sets the tone and the attraction to the eye. By our very own, Isaac Rosenbaum, has a keen sense of adventure and photography. Brought with so many assorted colors and the idea that expansion is growth - hot air balloons

represent that idea. This very cover will be the representation of everything you will find in this publication. It captures the moments of what the Phi Kappa Sigma experience is, especially in this very moment. At the end of the day, we can only celebrate what our past, current, and future members bring to the table each day. We believe we can bring the stories to life with this publication because the sky is the only limit. Lets spark some chaos and do things differently. ✨



# Thought

Brothers,

It is my pleasure to address you all as the Director of Operations for Phi Kappa Sigma Headquarters. Since the last Maltese Cross, many things of note have taken place. We have been able to Charter two new Chapters, University of Colorado – Boulder (Epsilon Delta) and the University of Oklahoma (Omicron). We are continuing expansion efforts at Iowa State, University of North Texas (Beta Eta) and University of British Columbia (Alpha Omega).

In the Fall of 2023, we are scheduled to return to the University of Illinois (Rho) and first-time expansions to the University of Houston. Looking past that, we have expansion dates set for Fall of 2024 at Oregon (Beta Alpha) and Kenyon College (Theta) and fall of 2025 dates with Indiana (Delta Pi) and West Virginia (Alpha Gamma). The work to get these expansions on the books has been extensive and exhaustive. The expansion team has been in touch with over 100 universities across North America, from UPenn to Ohio State to Butler to Denver to UC-Irvine.

As of last year, we have also begun conducting in person chapter visits for the first time before Covid. Instead of continuing with doing three-day visits at every chapter, we chose to spend an entire week with the chapters we viewed as the chapters who needed the most help to bounce back from covid. Although that helped stabilize many of our chapters, it is still proving difficult for many of our chapters to get to the level of operating that they once had. This year, staff has begun spending a week with all the chapters who need extra help, and three days with every other chapter we have time to get too.

Every single chapter lost some sort of institutional knowledge due to the pandemic, some more than others.

I have a single call to action. It is not for donations; it is not for calling in favors to schools; we want to expand too. It is to volunteer. Almost 30% of our Chapters either do not have a Chapter Advisor or have not talked to their advisor over the past year. We are trying to move every chapter to an advisory board model. On this board we will have various alumni advising several positions within the chapter. Including, but not limited to, the Alpha (President), Beta (Vice- President), Tau (Treasurer), Chi (Recruitment Chair), and Phi (Philanthropy/ Community Service). Some boards may have more offices and have advisors. We feel this is the best way to advise the entire chapter. Having a singular Chapter Advisor is too much work for one person. We also recognize that having multiple points of communication with a chapter is crucial.

Finally, I am aware that many of your chapters are currently not active. Myself and our current staff as well as our Executive Board are doing everything we can to return to as many campuses as possible. But we have an obligation to our current chapters to ensure their stability for years to come. If you are an alum from a closed chapter, please consider volunteering for a chapter that is not the one you were initiated into. Alumni from closed chapters understand why their chapter was closed and would add incredible insight on how other chapters can prevent that from happening to them. ✦

ONCE, ALWAYS



RYAN EISNAUGLE  
DIRECTOR OF OPERATIONS

## EXPANSION PIPELINE:

FALL 2022:

**UNIVERSITY OF BRITISH COLUMBIA** (ALPHA OMEGA)

**IOWA STATE UNIVERSITY** (COLONY)

**UNIVERSITY OF COLORADO-BOULDER** (COLONY)

FALL 2023:

**UNIVERSITY OF ILLINOIS** (RHO)

**UNIVERSITY OF MINNESOTA** (ALPHA SIGMA)

**UNIVERSITY OF HOUSTON** (COLONY)

**AUBURN UNIVERSITY** (COLONY)

FALL 2024:

**UNIVERSITY OF OREGON** (BETA ALPHA)

**KENYON COLLEGE** (THETA)

FALL 2025:

**INDIANA UNIVERSITY** (DELTA PI)

**UNIVERSITY OF WEST VIRGINIA** (ALPHA GAMMA)



# 2021:

---

Our new Epsilon Gamma Chapter chartered with 29 new members on February 5, 2022 at the **University of Delaware**. We want to welcome the newest chapter to our list as they continue to build a future.

**Boomer Sooner!** Phi Kappa Sigma wants to welcome our 8 new members to the Omicron Chapter at the **University of Oklahoma**.

We had the opportunity to open our Gamma Sigma Chapter at **Rutgers University-News Brunswick**. In the fall of 2021, our staff traveled down to New Brunswick, New Jersey to begin the expansion project on the campus. Since then, it's been successful adding 12 new members to the chapter this fall. Ryan Eisnaugle has added his time in assistance with recruitment, education, and the process to initiation into the Phi Kappa Sigma International Fraternity.

Go Eagles! We want to welcome the Beta Eta Chapter at the **University of North Texas**. Our West Region Consultant, Andy Silos, was able to establish a group of men for the chapter. Headquarter Staff are working hard to revitalize the chapter during the 2022 calendar year.



# CHARTERED:

---

# DELAWARE

# ACTIVE:

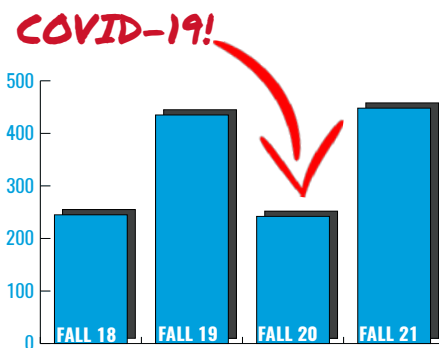
---

# OKLAHOMA RUTGERS NORTH TEXAS

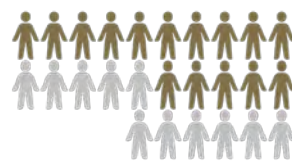
# THE DIFFERENCE YOUR SUPPORT MAKES

# 448 NEW MEMBERS

5-YEAR SINGLE SEMESTER HIGH



57% OF 2019 OSI ATTENDEES WENT ON TO HOLD AN EXEC BOARD OFFICE IN THEIR CHAPTER

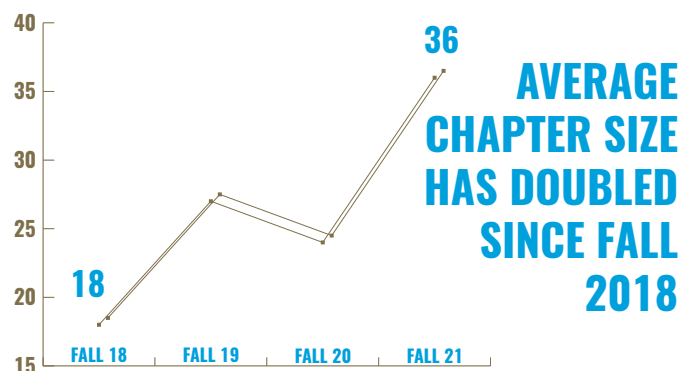


10% OF MEN OF HONOR ATTENDEES SINCE 2020 HAVE GONE ON TO BECOME CHAPTER PRESIDENTS



PHI KAPPA SIGMA IS ~ 20% MORE DIVERSE THAN THE AVERAGE GREEK ORGANIZATION\*

\* Statistics Via plaid



AVERAGE CHAPTER SIZE HAS DOUBLED SINCE FALL 2018

## MITCHELL HERITAGE SOCIETY OVERVIEW



Brothers,

I hope that this issue of the Maltese Cross finds you and your family healthy and safe as we continue to weather the pandemic. My thoughts go out to any of our Chapters and brothers who have lost friends or loved ones during these last few years.

Prior to the pandemic, to position the Fraternity for future success, the Executive Committee followed the Constitution & Acts to re-establish the perpetual fund known as the "Phi Kappa Sigma Endowment Fund." Shortly after, it was incorporated as a 501(c)3 organization (doing business as the "Mitchell Heritage Society") to support historical preservation, a recent membership directory project, and enable giving for a multitude of purposes. This was done to address requests from our alumni and friends to direct their tax-deductible gifts in more diverse ways (such as grants, attendance/travel costs, educational programming endowments, and preservation of historical artifacts) in addition to traditional scholarships.

Since our last update, we have been refining our mission, vision, volunteer agreement, and bylaws to continue developing an organization that is viable long-term. We have developed our online giving platform (<https://give.pks.org>), evaluated our reporting, and have been recruiting to fill out the Board.

Even though 2021 was only our first full year in existence, I am excited to share that we raised more than \$36,000. These gifts helped our staff and chapters to recruit 488 new members in the Fall semester (our highest total in five years) and increase our average chapter size to 36 (up from 18 in 2018). It has also helped fund 14 different expansion efforts, including both new campuses and dormant chapters. Your support continues to be critical. It is our honor and privilege to shepherd your donations to the areas of the Fraternity that need it most, so we humbly ask for your support in reaching our goal of \$100,000 by the end of the 2022 calendar year. These gifts will enable us to begin building the endowment necessary to permanently fund our Men of Honor annual leadership institute.

One way to consider giving is through AmazonSmile, by using the Amazon shopping app on your mobile phone. By signing up, Amazon will donate a portion of any purchase you make to the Mitchell Heritage Society at no additional cost to you. You can sign up by using the QR code found on this page. (Full disclosure: I work for Amazon Web Services, but all proceeds go directly to the Mitchell Heritage Society).

If you are inspired by the vision and mission of our new organization and are interested in supporting the Mitchell Heritage Society, we would love to hear from you! We are actively adding additional board members to join us in building and shaping the organization for years to come, so please contact me to learn more. Thank you for your support! ✨

FRATERNALLY,

MIKE PALLADINO  
PRESIDENT - MITCHELL HERITAGE SOCIETY  
ALPHA NU '03

## FOCUS ON GROWTH



RETURNING CHAPTERS



NEW CAMPUSES

AND MANY MORE TO COME!

DONATE AT

# GIVE.PKS.ORG



# PHI KAPPA SIGMA INTERNATIONAL FRATERNITY

## DONOR ROLL

The Brothers of Phi Kappa Sigma have included their acts of generosity through this year's contributions between the dates listed below. All the brothers of the organization understand the importance of ensuring that Phi Kappa Sigma's programs and services are available far into the future. Gifts from the Mitchell Heritage Society, the Fraternity and foundation, such as these, allow individuals and families to invest in and support Phi Kappa Sigma, guaranteeing its success for future generations. Please go to [GIVE.PKS.ORG](https://give.pks.org) or contact the International Headquarters for more information on the Phi Kappa Sigma International Fraternity Donor Roll.

*This year's contributions are listed from the dates of 3-16-21 to 3-18-22.  
Starting in 2022, contributions to the Phi Kappa Sigma International Fraternity  
Donation Roll will be on a calendar year cycle.*



### \$1,000+

Robert M. Carmichael | Stanford 1959  
Robert A. Kirsch II | South Alabama 1973  
Christopher S. Lee | South Carolina 1989  
Ray W. Tobias Jr. | Penn 1969

### \$500-\$999

Scott A. Aronson | New Hampshire 1992  
Matthew D. Belter | UC-Riverside 1992  
Tyler G. Bigenho | UC-Riverside 2015  
George H. K. Bryant | UCLA 1959  
Steven L. Craig | Rutgers 1991  
Sam R. Day | TCU 1965  
Richard W. Elliott | Penn 1957  
Charles D. Fitch | Oklahoma 1970  
Mark K. Fitch | Oklahoma 1980  
Corbin D. Harris | Oklahoma 2017  
Jeffrey R. Hickman | Rutgers 2000  
R. William Jenkins | Vanderbilt 1958  
Eric J. Johnson | Washington State 1994  
James D. Kidd | Oklahoma 2018  
Nathan McDonald | Washington 1999  
Jack A. McGuire DVM | Ohio State 1949  
Thomas M. Moody | South Carolina 1991  
Richard Owen | Rutgers  
Michael W. Palladino | Georgia Tech 2003  
R. Philip Petrowski | Wisconsin 2001  
Michael S. Pope | Illinois 1962  
Jeffrey R. Romph | Kenyon 1997  
Michael D. Rose | Oklahoma 1972  
Benjamin J. Scharff | Wisconsin 1995  
Thomas E. Shea | IIT 1986

### \$101-\$499

Douglas C. Allen | Maine 1962  
Walter I. Anderson | IIT 1956  
James E. Arthur | Purdue 1962  
Sharo M. Atmeh | Rutgers 2007  
Stuart C. Bean | Richmond 1979  
Jeremy Ryan Becker | IIT 2017  
Dustin R. Bergeron | Tulane 1963  
Lonny Boeke | Carthage 2000  
Nelson F. Brown | UCLA 1965  
Thomas H. Brownlee | Illinois 1957  
Gared W. Casey | Radford 1993  
Brian D. Chaney | Oklahoma 1985  
Irvin W. Christopher | UNO 1975  
Gary F. Colucci | Rutgers 2003  
Jeryl W. Cordell USN (Ret.) | IIT 1966  
Steve S. Counts | South Carolina 1966  
Gary C. Dake | St. Lawrence 1982  
Gordon H. Dempsey | Oklahoma 1947  
Sanford L. Dick | Washington 1972  
Robert B. Douglas | Radford 1990  
Steven C. Duggan | Oklahoma 1966  
Brendon M. Egan | UMASS-Lowell 2010  
James Egbert | Radford 1987  
Jonathan A. Ellenberg | Rutgers 1992  
Frederick T. Enslin | Alabama 1963  
James A. Fletcher | Northwestern 1970  
Jeffrey P. Franklin | Louisiana Tech 1975  
Jason A. Froehner | Carthage 2001  
Terry D. Gilson | Michigan State 1969  
Ryan J. Gilson | Michigan State 2014  
Thomas A. Gorman | UCLA 1954  
Robert D. Haden | UCLA 1963  
Chase D. Harris | Oklahoma 2013  
Edmund A. Hartt | Kenyon 1979  
Harry J. Hatz | Rutgers 1997  
Michael S. Hilla | Wisconsin 1997  
Christopher M. Horich | Virginia Tech 2000  
Jeffrey G. Horvat | Carthage 2002  
Paul Hwangbo | UC-Riverside 2014  
Robert Jawien | UC-Riverside 2018

**\$101-\$499**

Morgan B. Johnson | Georgia Tech 1993  
 Robert J. Johnson | Denver 1964  
 Eric Klein | Rutgers 2001  
 Donald L. Lassiter | Tulane 1979  
 J. Harvey Lester Jr. | Georgia Tech 1951  
 Daniel Lund III | UNO 1985  
 Kevin P. Manning | UMASS-Lowell 2021  
 Brian C. Martinenza | McDaniel 2004  
 Samuel R. Mask | Radford 1990  
 Louis C. Michel | West Virginia 1960  
 Harry A. Moreen PhD, FASM | IIT 1957  
 Daniel N. Heiss | Washington State 2009  
 Craig E. Nelson | Wisconsin 2000  
 Frank B. O'Neil | Alabama 1975  
 Paul P. Panzera | Rutgers 1991  
 Christopher J. Parisi | Rutgers 2010  
 F. F. Leland Payne | Oklahoma 1965  
 Jesse H. Perez | UC-Riverside 2016  
 Stephen G. Peterson Jr. | Georgia Tech 1952  
 Craig Pettengill | UCLA 1975  
 Garrett A. Pittman | Illinois 1984  
 Nick J. Polydoros | NIU 1978  
 Steven W. Richey | Alabama 1977  
 Chad J. Richter | Wisconsin 1998  
 Ronald P. Rickert | Penn State 1971  
 Peter D. Robison | Cornell 1972  
 Donald Root | Washington 1962  
 Raymond J. S. Rubye II | Randolph-Macon 2013  
 Ryan A. Schiller | Wisconsin 1996  
 Robert Schweikert Jr. | Rutgers 1993  
 James R. Seitz | Adrian 1971  
 Travis J. Serebin | Wisconsin 2012  
 Roger J. Siegel | Michigan State 1966  
 Ronald W. Siggs | Washington 1982  
 David M. Smith | New Hampshire 2006  
 William B. Stabert | Dickinson 1973  
 Alan R. Stahlman | Texas 1969  
 Joseph J. Stramich | IIT 1982  
 Alvin L. Sudduth III | Georgia Tech 1970  
 David K. Sullivan | UC-Berkeley 1974  
 David E. Thomas | Alabama 1977  
 John Thurber | Kenyon 1990

Peter R. Valesi | Rutgers 1992  
 Justin P. Viener | Randolph-Macon 1993  
 Ralph C. Villecca | Rutgers 2011  
 Charles W. Ward IV | Oklahoma 1998  
 Kevin R. Ward | UC-Berkeley 1980  
 John F. Weaver | Penn 1967  
 Brian G. Wittenkeller | Illinois 1960  
 David R. Wolf | Wisconsin 1999  
 Wilson Wong | Georgia Tech 1972  
 Cesar Yanez | UC-Riverside 2018

**\$100 or Less**

Robert J. Albertson | Penn State 1953  
 Andrew B. Amaya-Shaw | UNO 2017  
 Samuel L. Anderson | Kansas 1970  
 Gary F. Auclair | Maine 1960  
 James S. Balent | Franklin & Marshall 1991  
 Matthew D. Bambling | Rowan 2019  
 Clement P. Barbazon III | UNO 1975  
 Troy Bare | Washington 1988  
 Jacob M. Bates | North Texas 2014  
 Richard A. Beatty | IIT 1954  
 John W. Bedell PhD | Franklin & Marshall 1964  
 Richard F. Belme IV | Randolph-Macon 1964  
 Douglas A. Bergeron | UMASS-Lowell 2015  
 Robert C. Berglund | Stanford 1955  
 John W. Bevis | Richmond 1972  
 Charles M. Bierfeld | Northwestern 1966  
 Robert G. Bise PhD | UCLA 1959  
 William H. Boezinger | Stanford 1955  
 Robert G. Bohlmann | IIT 1971  
 C. David Bolender | Iowa 1965  
 Wayne Brill | Michigan State 1960  
 James E. Brown | West Virginia 1961  
 Dietrich Brunner | MIT 1959  
 Chester C. Buckenmaier Jr. ESAF (Ret.) | Penn State 1959  
 Andrew D. Butts | Wisconsin 2011  
 Gregory F. Caldwell | Ohio 1998  
 Christopher W. Campbell | Southern Maine 1994  
 Davis S. Cangalosi | Penn 1960  
 David E. Carmack | Richmond 1959  
 Brian D. Cherry | Washington 1983

Robert J. Chopp | IIT 1978  
 Michael T. Christy | UCLA 1991  
 Matthew J. Cicero | Ithaca 2004  
 Keith H. Clark | Denver 1962  
 James D. Coffman | North Texas 2015  
 Kenneth L. Coleman | Purdue 1962  
 Dante D. Collier | Texas 2020  
 Edward D. Cornell | South Alabama 1972  
 James H. Covell III | Clarkson 2007  
 William M. Crow Jr. | Drury 1972  
 Matthew B. Curry Jr. | Radford 2017  
 Matthew A. Curry | Vanderbilt 1999  
 Donald W. Curtis | Adrian 1970  
 James R. Day | IIT 1964  
 Michael Dempsey | Purdue 2023  
 Larry H. Dennis | Maryland 1963  
 Clifford M. Denny | Georgia Tech 1960  
 John W. Dietz | St. Lawrence 1990  
 Larry W. Digacinto | Penn State 1960  
 Brian Dillon | NIU 1988  
 William G. Dosse' | IIT 1958  
 Ronald H. Dunn | South Carolina 1960  
 Ronald L. Dupre | Ohio 1957  
 Robert F. Eames USA (Ret.) | Dickinson 1959  
 Dennis M. Elliot | Stanford 1962  
 Fred T. Erskine III | Washington & Jefferson 1964  
 William T. Fay | Vanderbilt 1976  
 Roy H. Feinberg USN (Ret.) | Oregon State 1975  
 Mark G. Fisher | Penn State 1967  
 Michael Fithian | Johnson & Wales 2004  
 Stan L. Foster | Oklahoma 1965  
 Richard C. Fox | Purdue 1976  
 Robert D. Fraser USA (Ret.) | UC-Berkeley 1957  
 Richard A. Fredrickson | West Virginia 1991  
 John M. Freeman | Randolph-Macon 1969  
 John W. Frese | St. Lawrence 1962  
 John P. Freund | Drexel 1989  
 Ronald W. Gemig | Wisconsin 1998  
 Jeffrey A. Gervase | SUNY-Fredonia 1992  
 Vernon G. Gillette | TCU 1965  
 B. Wesley Graves | Randolph-Macon 1980  
 Trent Green | Tulane 2023  
 Michael Hamm | Ohio 1970

A John Harper II | North Texas 1964  
 Richard C. Hartgrove | Washington & Lee  
 Ronald J. Hayden | Washington 1961  
 Steven R. Henning | Wisconsin 2013  
 C. William W. Hickman PhD | Washington & Lee 1960  
 Herman L. Hickman Jr. | Oklahoma 1956  
 John E. Hill USAFR (Ret.) | Michigan State 1997  
 Aaron James Hintz | Wisconsin 2018  
 James D. Hite III | NIU 2009  
 Joseph W. Holt | UNC-Chapel Hill 1929  
 Kenneth J. Holzscheiter | Penn 1963  
 Eugene L. Huffman | Georgia Tech 1955  
 Douglas G. Hutchinson | Georgia Tech 1953  
 Ronald E. Iverson | Stanford 1961  
 Arnav K. Iyer | Washington State 2020  
 David B. Jansky | St. Lawrence 1959  
 John A. Jeansonne Jr. | Tulane 1966  
 George M. Jeffrey | Penn 1968  
 Walter R. Johnson | St. Lawrence 1974  
 G. Robert Johnston | Washington 1955  
 William M. Keal | Georgia Tech 1958  
 Paul J. Kelly | SUNY-Potsdam  
 Gary G. Kemp | Ohio State 1964  
 David C. King | British Columbia 1958  
 Ronald J. Kline | Randolph-Macon 1971  
 Sandor J. Kovacs MD, PhD | Cornell 1969  
 Benjamin N. Kraljev | UCLA 1951  
 David E. Kramer | California University of Pennsylvania 1996  
 Mark T. Lab | Penn 1981  
 Gregory D. Lucy | Virginia Tech 1982  
 Christopher S. Lando | Princeton 2013  
 Vincent Latini | Seton Hall 1989  
 Christopher T. Leunberger | Wisconsin 2016  
 Richard H. Levin | UC-Riverside 1988  
 George B. Lewis | Duke 1986  
 Chengming Li | UC-Riverside 1988  
 Gil Lizalde | NIU 2001  
 Charles D. Londo | Michigan State 1969  
 Daniel C. Ludden | Maine 1992  
 Joseph H. Luplow JD | Michigan State 1971  
 Daniel C. Lyons PharmD | Towson 2001  
 Joel D. MacClaren | St. Lawrence 1977  
 Blake H. MacQueen | Alabama 2017

**\$100 or Less**

Robert L. Madison | Michigan 1962  
 Bala Mangia | UNO 2018  
 Walter K. McCarthy | Cornell 1972  
 Fred E. McCown | TCU 1961  
 Brian K. McCutchen | South Carolina 1983  
 Kurt McKinley | Washington State 1991  
 Thomas N. McLean | South Carolina 1961  
 Stephen G. Mehallis | Ohio State 1961  
 Jeffrey D. Merwin | IIT 1979  
 Stephen W. Mezzell | Alabama 1980  
 Ryan J. Miller | Wisconsin 2014  
 Sully W. Moore | UCLA 1987  
 Carl G. Morgan | Richmond 1990  
 Richard S. Mulligan | Kenyon 1973  
 Paul B. Mustian | Virginia Tech 1982  
 Robert S. Okleshen | Tulane 1973  
 Kenneth C. Olivier | Texas 1969  
 Peter B. Olson | Ohio 1966  
 John Onufreiczuk | Alabama 1993  
 George H. Page | Duke 1977  
 Tobias J. Park | UC-Riverside 2016  
 Robert O. Pasnau | Illinois 1956  
 John M. Penrose | Ohio 1964  
 James E. Petzing | Cornell 1955  
 James B. Potter CPA | Texas 1969  
 Williams E. Powers Jr. | Alabama 1964  
 Elbert Pugh | Randolph-Macon 1958  
 James R. Raatz | Purdue 1973  
 Frank H. Ramogida | Ohio State 1963  
 John E. Randall Jr. | South Carolina 1950  
 Paul J. Ristuccia | Clarkson 1983  
 David J. Rockman | UCLA 1988  
 David A. Roscum | Iowa 1982  
 David P. Rose | Kenyon 1981  
 Hollis F. Ryan | Toronto 1962  
 Joseph J. Scarpa | Seton Hall 1988  
 Paul S. Schmitt | Cornell 1978  
 Dainel R. Schnipp | Seton Hall 1995  
 Nathaniel G. Schoenfeld | Oklahoma State 2020  
 Lillian Schrafft | UMASS-Lowell 2022  
 Ronald L. Schumann Jr. | Louisiana Tech 1978  
 Dennis Shea | Maine 1984

Todd J. Sherman | Wisconsin 2016  
 Foster M. Shibles | Maine 1956  
 Thomas B. Shoebbotham | Oklahoma 1956  
 Russell S. Sifers | Kansas 1970  
 David A. Sims | Michigan State 1967  
 Jay S. Smith | Maine 1967  
 Richard C. Solt | Penn State 1960  
 Marvin K. Speigner Jr. | Alabama 1973  
 Gary A. Spivack | Randolph-Macon 1972  
 Edward C. Stahl | Purdue 1957  
 Adam S. Starr | Wisconsin 1997  
 Phillip B. Stott MD | Dickinson 1958  
 Douglas W. Stout | Ohio 1998  
 Ronald C. Stranix III | Ursinus 2012  
 Paul J. Stupinski | Cornell 1972  
 Michael H. Sumrall USA (Ret.) | South Alabama 1970  
 Charles D. Swope | Ohio 1967  
 Matthew R. Szarzynski | Purdue 2012  
 Ronald J. Talbert | South Carolina 1978  
 Oscar S. Tatosian | TCU 1982  
 Nils R. Thunman USN (Ret.) | Illinois 1953  
 C. Frederick Tolson | IIT 1966  
 John K. Totten | Oklahoma 1960  
 Leslie W. Tripp | TCU 1978  
 Vernon D. Ummel | Oregon 1958  
 Matthew G. Unfried | Towson 1999  
 William D. Vaughan | Drury 1974  
 Robert E. Vogel | Cornell 1952  
 Robert M. Wall | South Carolina 1958  
 Peter R. Walters | Bryant 1959  
 Henry V. Ward Jr. | UNC-Chapel Hill 1971  
 L. Charles Weatherby | TCU 1958  
 Austin M. Weber | Carthage 2020  
 Alexander M. West | TCU 2021  
 Brendan W. Whaley | Tulane 2017  
 Michael E. Williams | Wisconsin 1994  
 Quentin T. Williams | Texas 1996  
 Vladimir S. Yakopson | Penn 2000  
 Charles J. Yarbrough USAF | Penn State 1956  
 Terry P. Yarbrough | Richmond 1962  
 H. Jay Zink | UNC-Chapel Hill 1953

**GIVE.**  
**PKS.**  
**ORG**



**MDCCCL** MITCHELL  
*Heritage*  
 SOCIETY

**Scepter**  
 MENTORSHIP PROGRAM

**MEN of HONOR**  
 LEADERSHIP INSTITUTE

**KEY SESSIONS**

**AMBASSADOR PROGRAM**

**OPERATIONS SKILLS INSTITUTE**

# PHI KAP HIGHLIGHTS

Phi Kappa Sigma is a fraternity filled with extraordinary men who do extraordinary things. Whether it be on their campus, in their community, or even their general character, the diverse nature and ambition of all our Brothers and their contributions to society are what makes our Fraternity great.

We want to recognize some of these men in this edition of the Maltese Cross. Going forward, you will read stories of a variety of members who, despite having different narratives, lives and experiences, all share one commonality: their drive to pursue something bigger than themselves.

## Sahil Zafar

**Rutgers University-New Brunswick**

Gamma Sigma, '23

Sahil is the current president and founder of the Gamma Sigma chapter at Rutgers University. He was initiated at the Delta Gamma chapter at Rowan University where he spent his freshman and sophomore year. There he developed a close bond with his brothers at Rowan, and learned what it means to be a Phi Kap. He transferred his junior year to Rutgers University where he joined the efforts of HQ to bring Phi Kap back to Rutgers. They recruited the founders of the colony, and Sahil went on

to become the first and current Alpha (President) of the Gamma Sigma chapter. His goals are to create a chapter in which the values, success, and brotherhood are to a standard never seen before at Phi Kappa Sigma. He is beyond thankful for the bonds he has made and is still creating through Phi Kappa Sigma and feels truly blessed to have this opportunity. Sahil has enjoyed the process of building up the chapter and looks forward to what the future brings. ✦



## Brandon Duncan

**University of Oklahoma**

Omicron, '22

Brandon is serving as the current Alpha of the Omicron Colony at the University of Oklahoma; despite joining as a last-semester senior he is thankful for the opportunity to contribute to something meaningful until the very end of his undergraduate career. He is an accounting major senior who intends on going directly to law school

upon graduation or trying to work for IHQ for a couple years before resuming school. The biggest draw to joining a new colony in his last semester was being able to work with younger undergraduates to build something meaningful to come back to and support as an alumnus. ✦

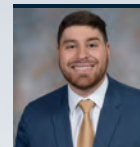


# SHOP PKS

[shop.pks.org](http://shop.pks.org)

# CHAPTER UPDATES/ ALUMNI CHAPTER UPDATES

## NORTHEAST REGION



**Pantelis Patselikos**  
ppatselikos@pks.org  
(463) 206-9971

### CLARKSON

We have created better relationships with almost all of the Greek houses in Potsdam, NY. Also, the chapter has gotten approval from SUNY Potsdam to start recruitment for an interest group to restart the Beta Upsilon Chapter. Alek Ahrens: Helping young BSA scouts with their journey through scouts and their path after they graduate high school. Also helping establish a connection with the local boy scout camp, to help with projects and help the university re-establish its connection with the camp that has been non-existent for 30 years. Peter Fatouros: Helping freshmen through their first semester at Clarkson and helping tutor students to help them through their classes. While also helping make Greeks look better on campus being IFC president.

### FRANKLIN & MARSHALL

Completed MCS for the third time in a row on time. Worked towards paying off a good portion of the debt. Expanded interest in the fraternity through a variety of social events such as mixers. We are expecting more new members this semester than last semester.

### MAINE

The Alpha Delta Chapter raised over \$2,000 for our brother Celso Silva through our "Lawn Games for Celso" event. We initiated 11 new members. We have fixed all the sinks in our house along with the Maine water pipe in our basement. We are in the running for the top intramural sports fraternity on campus.

### MCDANIEL

We began recruiting heavily again after a large break due to strict covid regulations and began rebuilding our chapter.

### MIT

The Gamma Upsilon chapter was able to navigate the pandemic and still have a fulfilling on-campus experience despite many restrictions throughout the year. For any specific information on the chapter, please feel free to contact the Northeast Region consultant, Christian Roche at [croche@pks.org](mailto:croche@pks.org)

### PENN STATE

This past year our Chapter has accomplished a great deal! Over the last three semesters we have had an average new class size of 17 members. We also recently made some revisions to our bylaws to help our members hold themselves more academically and socially accountable.

### PRINCETON

The Beta chapter inducted the Alpha Mu class and met with chapter alum during our annual New York city event. We also recently held spring semi formals. It was a success, and we are looking forward to the successful closing out of this semester and watching the current senior's graduate. As always, Nationals is a great resource for us and we would love to stay affiliated if the financials make sense - currently, paying Nationals fees makes up more than 80% of our budget and we find it difficult to continue paying the same dues. For any specific information on the chapter, please feel free to contact the Northeast Region consultant, Christian Roche at [croche@pks.org](mailto:croche@pks.org)

### RAMAPO

The Delta Omicron chapter organized a clothing drive for the Ukrainian refugees. The brothers were able to get over 3 boxes of clothing and items to donate to the Ukrainian Church in Garfield, NJ. For any specific information on the chapter, please feel free to contact the Northeast Region consultant, Christian Roche at [croche@pks.org](mailto:croche@pks.org)

### ROWAN

Due to circumstances presented to us over multiple years we found our chapter at a low spot of 13 active members to start of this school year. Through the hard work and dedication, we now have over twenty actives and are looking forward to our biggest class this semester.

Our current Alpha, Matt Pacewicz, continues to make significant impacts on our chapter as well as the surrounding community. Matt's hard work does not go unnoticed from being a civil engineering major, president of a fraternity, working a job, and everything else in between. Matt is someone that takes every opportunity he can to help people and it is shown within this chapter.

### UMASS-LOWELL

This year, we were finally able initiate new members after 18 months of being away from campus due to COVID. We also later obtained a new pledge class and eventually initiated them as well which was great because like every other Fraternity and Sorority on campus, our numbers were starting to hurt due to the lack of new members. Returning to campus, we were able manage everything despite being away for so long and we are continuing to have a presence on our campus as we are very involved on campus.

### UMBC

We regained some of our numbers due to Covid 19 as well as creating better relationships with Sororities and other organizations on campus. We came in strong with new faces and enthusiasm to be recognized in our community.

Josh Slaughter, winner of the Marshall Scholar and the second UMBC student to win it and the first in 29 years to be selected for the award Chris Slaughter led research and had it posted on our UMBC website for Training and

Evaluating Classifiers of Mental Workload Using FNIRS: The Impact of Window Size and Feature Choice

### URSINUS

This year the Delta Rho chapter initiated 10 new brothers into our chapter, taking our active member count from 8 to 18. While at Grand Chapter we also earned two awards for our staunch financials as well as one award for community service.

## SOUTHEAST REGION



**Ryan Eisnaugle**  
reisnaugle@pks.org  
(463) 206-9954

### ALABAMA

The Alpha Kappa chapter was able to navigate the pandemic and still have a fulfilling on-campus experience despite many restrictions throughout the year. For any specific information on the chapter, please feel free to contact the Southeast Region consultant, Ryan Eisnaugle at [reisnaugle@pks.org](mailto:reisnaugle@pks.org)

### GEORGE MASON

The Gamma Xi chapter was able to navigate the pandemic and still have a fulfilling on-campus experience despite many restrictions throughout the year. For any specific information on the chapter, please feel free to contact the Southeast Region consultant, Ryan Eisnaugle at [reisnaugle@pks.org](mailto:reisnaugle@pks.org)

### GEORGIA TECH

The Alpha Nu chapter was able to navigate the pandemic and still have a fulfilling on-campus experience despite many restrictions throughout the year. For any specific information on the chapter, please feel free to contact the Southeast Region consultant, Ryan Eisnaugle at [reisnaugle@pks.org](mailto:reisnaugle@pks.org)

### RADFORD

The Beta Omega chapter was able to navigate the pandemic and still have a fulfilling on-campus experience despite many restrictions throughout the year. For any specific information on the chapter, please feel free to contact the Southeast Region consultant, Ryan Eisnaugle at [reisnaugle@pks.org](mailto:reisnaugle@pks.org)

### RANDOLPH-MACON

The Tau chapter was able to navigate the pandemic and still have a fulfilling on-campus experience despite many restrictions throughout the year. For any specific information on the chapter, please feel free to contact the Southeast Region consultant, Ryan Eisnaugle at [reisnaugle@pks.org](mailto:reisnaugle@pks.org)

### SOUTH ALABAMA

Had our first big Turkey Bowl weeklong philanthropy event. Was able to take part in the Dauphin Island Mardi Gras Parade.

The Beta Mu chapter was able to navigate the pandemic and still have a fulfilling on-campus experience despite many restrictions throughout the year. For any specific information on the chapter, please feel free to contact the Southeast Region consultant, Ryan Eisnaugle at [reisnaugle@pks.org](mailto:reisnaugle@pks.org)

## SOUTH CAROLINA

The Alpha Eta chapter was able to navigate the pandemic and still have a fulfilling on-campus experience despite many restrictions throughout the year. For any specific information on the chapter, please feel free to contact the Southeast Region consultant, Ryan Eisnaugle at [reisnaugle@pks.org](mailto:reisnaugle@pks.org)

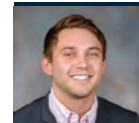
## TULANE

The Mu chapter was able to navigate the pandemic and still have a fulfilling on-campus experience despite many restrictions throughout the year. For any specific information on the chapter, please feel free to contact the Southeast Region consultant, Ryan Eisnaugle at [reisnaugle@pks.org](mailto:reisnaugle@pks.org)

## UNO

We overcame adversity from Hurricane Ida, although we lost money, a chapter member who had to go inactive due to hardship from the storm, and the ability to have formal recruitment, we never let our brotherhood falter. We were still Phikaps, and no one could take that away from us. We eventually came back together in-person and celebrated our return. We also recruited 4 outstanding men to be a part of our Brotherhood.

## MIDWEST REGION



**Sean Cooley**  
[scooley@pks.org](mailto:scooley@pks.org)  
(463) 206-9970

## CARTHAGE

We raised over 2,000 dollars for children in Milwaukee for Heels for Hope while collaborating with a local sorority. We grew closer as a brotherhood while taking part in a variety of brotherhood events. We have 2 captains on the Carthage Esports team in the brotherhood. We have improved relations with Greek

organizations around campus. We are a growing Fraternity with achieving a 7-person pledge class and we also have a good reputation around campus as a Fraternity.

## IIT

This past year we came together as brothers and went to see our brother Cameron Kanofsky's production called, "The Great Emu Offensive". This play was written by Cameron (Brother Good Noodle, AEPKS '23) and his high school friend Andrew over the course of two years or so and was a full one-act comedy about when Australia went to war with Emus and lost. He tried to convince the school's theater troupe (33rd Street Productions) to put it on, and it happened! Involving also Rickey Mutnansky and Daniel Keats from our chapter, the play was a huge success for a small student-written show and was well-received by the IIT community. Our Psi at the time, Jake McMahon, was kind enough to make it an official event for the brothers of the house to go see it, and we had a lovely turnout! It was a huge undertaking to write anything of this caliber, let alone put it on, and Cameron ended up having to play a part (due to low post-covid membership of the theater troupe) as well as being the writer and president of the organization. As such, he is incredibly grateful for everyone that came out to see the production and for the two brothers that helped him put it on! Thanks to the hard work of our brother Ethan Hawn, we have been helping with blood drives and working together with Versiti Blood Center of Illinois. With the collaboration of our brother Ethan Hawn and Roberto Villaseñor, Alpha Epsilon chapter will be working together with the mentor program to volunteer to tutor high schoolers online.

## MICHIGAN STATE

The Beta Delta Chapter was able to navigate the pandemic and still have a fulfilling on-campus experience despite many restrictions throughout the year. For any specific information on the chapter, please feel free to contact the Southeast Region consultant, Joseph Thomas at [jthomas@pks.org](mailto:jthomas@pks.org)

## NORTHERN ILLINOIS

This past fall semester after an unsuccessful rush the year prior we initiated 8 new members this fall and on track for a successful spring rush. Brother Alex Cruz, our recruitment chair, also serves as the recruitment chair for IFC on campus. He sets up recruitment events on campus and works with other fraternities to bring more exposure to Greek life.

## PURDUE

We have made significant renovations to several of our rooms in the house. Putting in new flooring and walls of those rooms. Also, our chapter is continuing to grow at a greater rate through this past semester's recruitment.

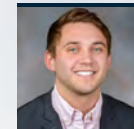
## TORONTO

The Alpha Beta chapter was able to navigate the pandemic and still have a fulfilling on-campus experience despite many restrictions throughout the year. The Chapter recruited 17 gentlemen for the 2021-22 academic year at the University of Toronto. For any specific information on the chapter, please feel free to contact the Midwest Region consultant, Joseph Thomas at [jthomas@pks.org](mailto:jthomas@pks.org)

## WISCONSIN

Starting the Fall 2021 semester, Alpha Theta was finally able to secure a location on Fraternity row, increasing the brand reach of PKS in the Madison community. Although only 6 members are currently house, brothers have signed leases to secure the whole property for the 2022-2023 academic year. 9 amazing new brothers joined the chapter in the fall and many brothers are already calling them the next generation of Phi Kaps to build the chapter from!

## WEST REGION



**Sean Cooley**  
[scooley@pks.org](mailto:scooley@pks.org)  
(463) 206-9970

## OKLAHOMA STATE

We held our highest earning philanthropy event this year, Shave a Skull, which grossed over two thousand dollars for LLS. In the fall, we earned second overall place in Oklahoma State's Student Organization Homecoming festivities, our highest ranking to date. James Gallegos, who was our Beta the past year, has worked hard to keep us on topic as a chapter. He now serves as our Brotherhood Chair, planning fun and unique events as a chapter.

## TARLETON STATE

We participated and hosted a wide variety of events, but our skulls week events were truly great. During skulls week we had events for 5 days, all raising money for Leukemia and Lymphoma Society. Events such as carnival games, pie a phi kap, and our annual pumpkin smash.

We want our alumni to know that they are always welcome. Although we seem focused on the present and future, we have not forgotten those in the past that got us here. Thank you all.

## TCU

Will Porter made an impact on our community by co-launching a medical facemask company called, "Frog Masks." He helped supply citizens in Fort Worth and surrounding areas during the COVID-19 Pandemic.

We initiated and welcomed a new member class, and we are excited to see how they will grow as Men of Honor.

## TEXAS

The Sigma Chapter used social media to raise over 500 dollars for our philanthropy. Increased our number of members Held some very fun social events.

## TEXAS STATE

This past semester the Gamma Mu Chapter changed Phi Kap here at Texas State University. We had our first mixer, our philanthropy week, and are currently growing our brotherhood. This past semester has also grown incredibly. We as a chapter have raised actual money for our LLS and helped the community much more.

## UC-BERKLEY

This past academic year, we have seen tremendous growth in our chapter and our brotherhood. We started the fall semester shy of 22 active members. On the 19th of November, we brothered in 19 outstanding Gentlemen. Throughout the semester, we watched our pledges turn from boys to men of honor. They each surprised us throughout the rush process and demonstrated their commitment to brotherhood, scholastic performance, and the fraternal spirit of Phi Kappa Sigma.

## UCLA

The Alpha Psi Chapter is in the process of revitalizing with heavy recruitment initiatives by the IHQ staff. Currently, IHQ staff consultants, Ryan Eisnaugle, Christian Roche, and Andrew Amaya-Shaw are on the campus recruiting students at UCLA to join the Alpha Psi Chapter. The Housing Corporation of the Alpha Psi Chapter are assisting in the efforts to get the chapter restarting with IHQ for the winter and spring quarters at UCLA For any specific information on the chapter, please feel free to contact the consultants, Ryan, Christian, and Andrew.

## UC-RIVERSIDE

Beta Rho Chapter is a chapter on the rise, fueled by motivated new members under new leadership after two years of pandemic related struggles. From a low of 7 members in the Fall Quarter, we are now up to 24 active and new members. We have also strengthened our inter-Greek relations and have actively participated in philanthropies and school events. Overall, we hope we continue this trajectory of growth as it only right for UCR's oldest established Greek fraternity.

## WASHINGTON

The Alpha Upsilon Chapter signed a 20 person pledge class for the fall semester of 2021. The house has a new pool deck, and the pool is going to be plastered. There was a great Founder's Day attendance for the Alpha Upsilon Chapter at the University of Washington.

## WASHINGTON STATE

This year the Beta Psi Chapter jumped from 38 to 56 active members on our roster from spring and improved our overall position in grades across IFC from 12th position to 6th out of 26 fraternities on campus. (2nd of out "wet houses" on greek row). 🏆



# The Men Who Started It All

MULTI-YEAR  
RETROSPECTIVE SERIES

**2020**

Dr. Samuel Wylie Brown Mitchell

**2021**

Charles Hare Hutchinson

**2022**

Andrew Adams Ripka

**2023**

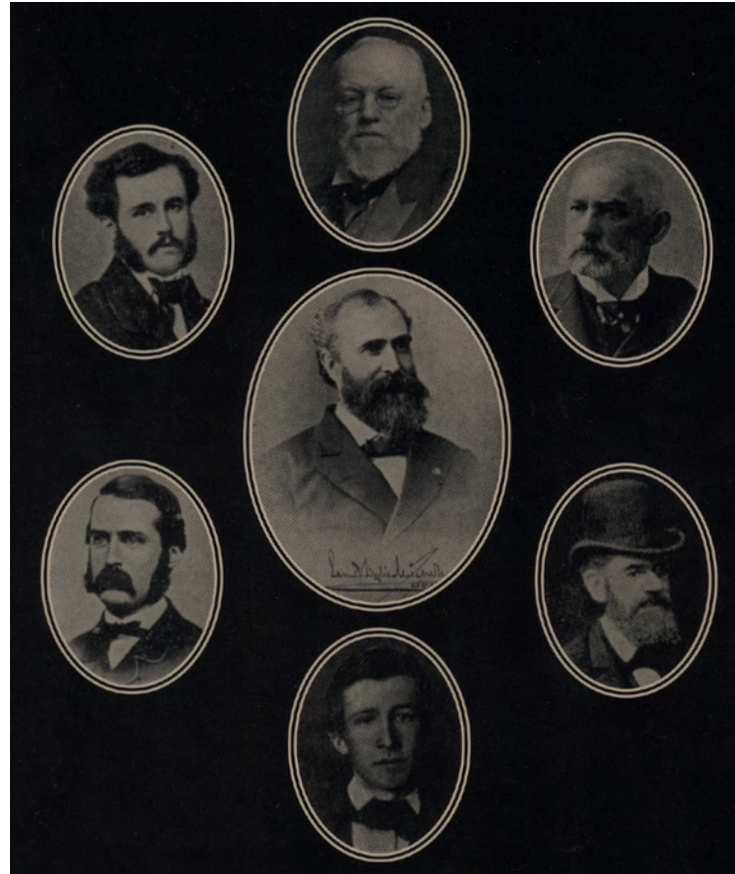
Alfred Victor du Pont

**2024**

John Thorne Stone

**2025**

(175th Grand Chapter Edition)  
Duane Williams & James Bayard Hodge



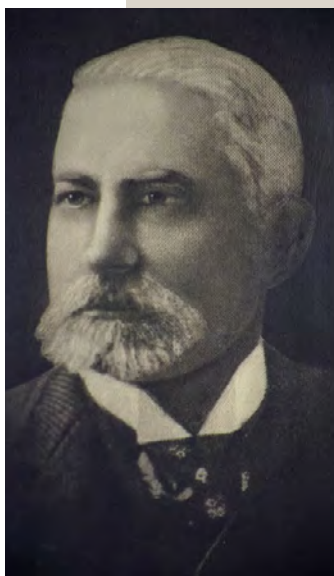
## TELLING OUR STORY

Nothing like a fresh new page for a new tradition for the Maltese Cross. We want to introduce the new Diversity, Equity, and Inclusion page for our annual magazine. We've highlighted it before in past publications, and now it is time to give it some light with its own page. The greatest part about our audience is that we believe that Brotherhood is more than skin deep in our membership, now and forever. Here, we get to celebrate and tell the most compelling stories, highlight the most creative people, and bring the community a little bit closer than it was before. From this issue till it can run no more, Phi Kappa Sigma International Fraternity would love to welcome you to the Diversity, Equity, and Inclusion page to continue to tell compelling stories.

We are here to celebrate you, whoever and wherever you are. We will be looking for you to tell your story. Even if society sees you differently, here at Phi Kappa Sigma International Fraternity we believe in all our members. Like any adventure, you have to reach out and grab it. Do not hesitate. We are always on the lookout for compelling stories. If you have a story and want to be highlighted whether it is you, a group of people, or even a Phi Kap in your area doing something extraordinary, we will always have our door open.

## ANDREW ADAMS RIPKA

Andrew Adams Ripka, son of Joseph and Catherine (Guger) Ripka, was born in Philadelphia, February 16, 1833. After acquiring his early education in schools of his native city, he entered the College of New Jersey (Princeton), in 1848. After a year, Andrew returned to Philadelphia and joined the Junior Class at the University of Pennsylvania. In this period, Andrew found himself among the elite and founded the Phi Kappa Sigma International Fraternity with his fellow classmates Dr. Samuel Brown Wylie Mitchell, Charles Hare Hutchinson, John Thorne Stone, James Bayard Hodge and Duane Williams. The allurements of a prospective mercantile career induced him to leave college at the end of his junior year and embarked in the cotton manufacturing business. Andrew found himself turning his attention to mining and manufacture of iron. During the Civil War, he served as captain in the 119th Pennsylvania Volunteer Infantry between 1862-1863 and resigned shortly after. We don't have much on how he lived the next 30 years of his life, but we want to celebrate his dedication and his love for the Phi Kappa Sigma organization in our 2022 Maltese Cross magazine. Andrew Adams Ripka died in Boston, Massachusetts on May 9, 1902. ✚





# CHAPTER ETERNAL

We offer this loving prayer for all Phi Kappa Sigma Brothers who have entered the Chapter Eternal

*"Thanks and praise be rendered now and forevermore to Thee, dear Lord, for having so graciously blessed our Fraternity Brother now fallen asleep. We trust Thee to re-unite the soul with the body in heavenly brightness on the Last Day. Lord, may You grant unto us a godly-walk and peaceful departure at Your appointed time. Restore, O Lord, all distressed hearts with sweet comfort and keep us all perpetually in Thy grace for the sake of Thy eternal mercy and goodness. Amen."*

## Alabama (Alpha Kappa)

George H. Berry (1952)  
Douglas N. Kelly (1993)  
Felix C. Nicholas (1954)

## British Columbia (Gamma Rho)

Robert H. Spring (1959)

## California University of Penn. (Gamma Zeta)

Kenneth A. Hulst (1999)

## Cornell (Alpha Rho)

George P. Barton (1968)  
Thor S. Johnson (1950)

## Dickinson (Epsilon)

Oscar W. Meneses (1951)  
J. Kirk Swigert (1954)

## Duke (Nu)

Richard L. Betts (1957)  
Donald E. Teller (1959)  
William K. Teller (1956)

## Drury (Beta Kappa)

David R. Bishop (1969)

## Georgia Tech (Alpha Nu)

William D. Dodge (1959)  
Nickolas L. Faust (1969)  
Richard E. Kerner (1951)  
William F. Roberts (1968)

## IIT (Alpha Epsilon)

Thomas F. Harrington (1959)  
Dale E. McDaniel (1961)  
Roland W. Roberts (1948)

## Illinois (Rho)

Robert P. Cowsert (1949)  
Donald P. Dubas (1972)  
Roger M. Hawk (1964)  
John Longden (1956)  
Jack L. Webster (1957)

## Iowa (Alpha Phi)

Robert D. Ingle (1962)

## Kenyon (Theta)

George W. Lanning (1952)

## Maine (Alpha Delta)

James F. D'Angelo (1951)  
Steven E. Kunz (1968)  
Kendall G. Lund (1955)  
Kenneth A. Marden (1950)  
Ronald E. Pooler (1951)  
Joseph B. Probert (1959)  
David M. Quinlan (1985)  
John K. Thurston (1957)

## Maryland (Alpha Zeta)

David W. Martin (1973)

## Michigan State (Beta Delta)

Gerald T. Sosnowski (1958)

## Millersville (Gamma Iota)

B. Todd Myers (1990)

## Ohio (Beta Zeta)

Ronald L. Dupre (1957)

## Ohio State (Alpha Chi)

Fred. C. Houck (1955)  
John G. Keller (1949)

## Oklahoma (Omicron)

W. Lynn Draper (1960)  
Eliot R. Feller (1977)  
Charles R. Gasaway (1959)  
Mitchell S. Holmes (2018)  
Melvin L. Penn (1972)

## Penn. State (Psi)

Philip W. Bailey (1957)  
Gerald A. P. Boyle (1967)  
Chester C. Buckenmaier Jr., -  
USAF (Ret) (1959)  
Kevin M. McKee, CLU, ChFC (1982)

## Pennsylvania (Alpha)

David F. Kaplan (1967)  
George W. Small (1948)  
Robert L. Stevens (1956)

## Purdue (Alpha Xi)

S. Ray Bell (1951)  
Mark S. Geyer (1982)  
James V. Merritt (1958)  
Richard J. Rosebery (1957)

## Rowan (Delta Gamma)

Max Grey (2021)

## St. Lawrence (Beta Iota)

Anthony B. Serlin (1966)

## Southern Maine (Delta Omega)

Derrick A. Nichols Jr. (2019)

## Tulane (Mu)

Michael N. Boone (1967)

## UC-Berkeley (Alpha Lambda)

James W. Graham (1948)

## UCLA (Alpha Psi)

Keith A. Barker (1966)  
Bejamin T. Lillegraven

## UMASS-Cambridge (Alpha Mu)

Walter John Kocher Jr. (1950)  
Philip B. Mitchell (1958)

## UNC-Chapter Hill (Lambda)

Wilford P. Penny (1948)  
Spottswood E. Robinson (1960)  
Edwin H. Shuford (1950)

## Upsilon

Paul F. Jessup PhD (1960) -  
Franklin & Marshall (Zeta)  
Ronald S. Koelle (1954)  
James E. Underwood (1959)  
David Wirth (1971)

## UC-Riverside (Beta Rho)

Michael J. Palma (1990)

## UT-Austin (Sigma)

Tracy F. Smith (1955)

## Vanderbilt (Alpha Iota)

Coy D. Baggett Jr. (1965)  
James A. Ridley (1964)  
Barton F. Robison (1962)  
Robert A. Sommers (1959)

## Virginia (Eta)

Stanley S. Harris (1951)  
Daniel N. Mohler (1950)  
Gerald Moutaigne (1947)  
Gordon W. Wallace (1987)

## Washington (Alpha Upsilon)

William C. Scott (1975)  
John Franklin Wheatley (1978)

## Washington & Lee (Alpha Alpha)

Jeffrey D. Day (1989)  
Richard D. King (1972)

## Washington & Jefferson (Delta)

Edward M. Peck (1967)  
James W. Scharf (1967)  
William J. Thompson (1948)



Brothers,

We've had the gracious opportunity in the last two years, thinking differently. I have tried to push the envelope with the Maltese Cross project, giving you the keys to creating your own story. The Maltese Cross magazine is the most unique publication amongst the Greek community and that is what I want it to be. We want to be the best. Our goal is to be the first ever Greek organization to have an award-winning magazine that takes our audience on a unique experience while displaying what Phi Kappa Sigma has to offer to our members – past, present, and most importantly, the future.

Welcome to our celebration. A celebration of the progress, the growth, and the future of Phi Kappa Sigma. This part of the celebration allows you to connect with active members, alumni, and the staff at the International Headquarters, for the first time, ever. With people like myself, your Editor-In-Chief of the 2022 Maltese Cross. I want to thank my dearest friend, Darold Bivens, who was a pioneer in this annual publication, and believed in me throughout the process over the years.

The purpose of the Expansion Edition is that adventure is always out there. Your adventure is out there waiting on you, somewhere and you just need to stick your hand out there and grab it. On a bright, sunny morning in Los Angeles in the middle of September, I lived the same moment that Carl and Ellie had in the Disney movie, Up, while sitting rooftop with Royce Hall standing tall in the background on UCLA's campus. The vision brought me here right to the front cover of this year's magazine. This journey has taught me to make life the biggest adventure and to stuff as many people as possible along the way while doing it. More importantly, it is never too late doing so. Go ahead, put air in that balloon, tie it up, let it go and watch it soar! However, many balloons it takes!

This special dedication is to the one who believed in me far more than anyone in this world – Cheryl E. Nichols. You will be forever the rock and the soul of my mother, and I can't thank you enough for your existence and being the best human being, you could be to our family. You are able to keep our family dreaming and believing in us, day in and day out. Every night, when I get out of my car, I look at the stars on the short walk to my apartment and think of you. You taught me to close my eyes, stick my head in the clouds, and take a deep breath and calm my soul.

I want you to hear it from my voice. I will always love you and thank you for being you, especially for what you have accomplished in your life. This one publication is for you. You will never be alone. You will always have our family beside you through your fight against the cruel stroke that occurred in 2021. I might not be able to see you every day, but your eternal flame is always buried inside me, my mother, and Wesley. We want to give the gracious opportunity to assist in fighting and promoting stroke awareness with the charity foundation of yours or the family choosing.

Like last year, my favorite is always the next one. Let's celebrate the growth that we have accomplished now and do it with joy in our hearts. Join me in celebrating our newest expansion edition and scan all the QR codes on where you see that little brown Maltese cross. Like this one in the bottom corner of this article. There, you will experience real magic. ✨



FRATERNALLY,

JOSEPH P. THOMAS  
EDITOR IN CHIEF - MALTESE CROSS 2022  
ALPHA KAPPA, 17



# Grand Chapter Forth Worth 08/3-08/05/23'



**Send us Your Email!**  
staff @pks.org



**Follow us on Instagram!**  
phikappasigma



**Become a Follower!**  
facebook.com/phikap



**Join Our Group!**  
Search: Phi Kappa Sigma  
International Fraternity